

003 ■ SYBIL ANDREWS
Days End, 1961
\$7,000/9,000

lino block on paper
10x10 in. / 25x25 cm.

LEVIS

FINE ART AUCTIONS & APPRAISALS



FINE ART AUCTION
November 5, 2017

LEVIS

FINE ART AUCTIONS & APPRAISALS

FINE ART AUCTION

Sunday, November 5, 2017 at 1:00 PM

Roderick Mah Centre for Continuous Learning

Mount Royal University

4825 Mount Royal Gate SW
Calgary, Alberta

PREVIEW

Roderick Mah Centre for Continuous Learning

Mount Royal University

4825 Mount Royal Gate SW

Friday, November 3rd from 5:00 PM to 8:00 PM

Saturday, November 4th from 10:00 AM to 5:00 PM

Sunday, November 5th from 10:00 AM to 1:00 PM

Auction starts Sunday, November 5 at 1:00 PM

Buyers premium 17%

Some or all lots are subject to a reserve

For more information, please contact:

Doug Levis or Cheryl Sonley

Our office and art storage location:

1739 10 Avenue SW

Calgary AB T3C 0K1

Tel: 403-541-9099

Fax: 403-541-9097

E-mail: mail@levisauctions.com

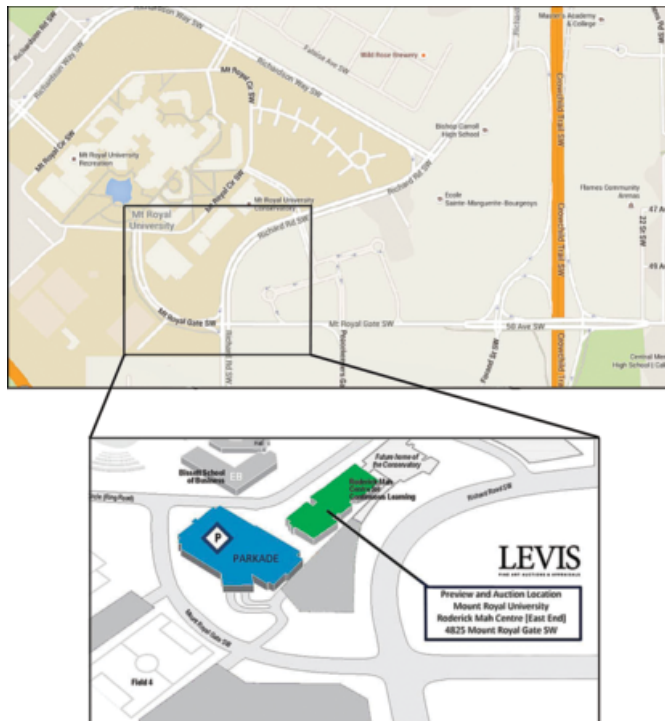
Web: www.levisauctions.com

and www.levisonlineauctions.com

Thanks to:

CleanPix (layout)

Kallen Print (printing)



CANADIAN ART LOTS	001 - 109
CONTEMPORARY ART LOTS	201 - 234
INTERNATIONAL ART LOTS	301 - 325
4th Session LOTS	401 - 460

Visit our website for complete details on every lot including additional items to this sale.

www.levisauctions.com

Next auction: April 22, 2018

CANADIAN ART
LOTS 001 - 109



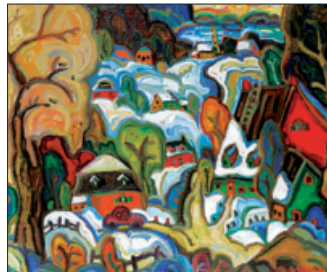
001 ■ DAVID T. ALEXANDER
Riverbank Series #2, 1991 acrylic on canvas
\$2,500/3,500 23.25x57.75 in. / 59x147 cm.



002 ■ DAVID T. ALEXANDER
Creek Area - Emerald acrylic on canvas
\$1,200/1,500 16.25x20.25 in. / 41x51 cm.



003 ■ SYBIL ANDREWS
Days End, 1961 lino block on paper
\$7,000/9,000 10x10 in. / 25x25 cm.



004 ■ PIERRE BEDARD
Le Calme de L'Hiver oil on canvas
\$900/1,200 30x36 in. / 76x91 cm.



005 ■ CAMERON BIRD
Fog Below the Three Sisters oil on canvas
\$2,000/3,000 24x30 in. / 61x76 cm.



006 ■ DAVID LLOYD BLACKWOOD
Bonfire Night on Greenspond Island etching
\$1,500/2,000 14.75x35.5 in. / 37x90 cm.



007 ■ MOLLY LAMB BOBAK
Anemones [2] oil on canvas board
\$1,500/2,000 8x5 in. / 20x13 cm.



008 ■ NICHOLAS J. BOTT
Mount Andromeda - Ice Fields oil on canvas
\$4,000/5,000 35.25x47 in. / 90x119 cm.



009 ■ NICHOLAS J. BOTT
Mountain Flair oil on canvas
\$3,000/4,000 29.5x39.25 in. / 75x100 cm.



011 ■ JOHN H. BURROW
Skater's Pond oil on canvas
\$2,500/3,500 30x40 in. / 76x102 cm.



010 ■ ANNORA BROWN
Nasturtium watercolour on paper
\$600/800 12x17.5 in. / 30x44 cm.



012 ■ JOHN H. BURROW
Whistler Village Stroll oil on canvas
\$1,500/2,000 24x24 in. / 61x61 cm.



013 ■ JOHN H. BURROW
They Came Before Us oil on canvas
 \$1,000/1,200 14x24 in. / 36x61 cm.



017 ■ M. EMILY CARR
From Esquimalt Road watercolour on paper
 \$6,000/8,000 4x5.5 in. / 10x14 cm.



021 ■ HORACE CHAMPAGNE
Sunset St. Sixte, Quebec pastel on paper
 \$800/1,200 17.25x23.25 in. / 44x59 cm.



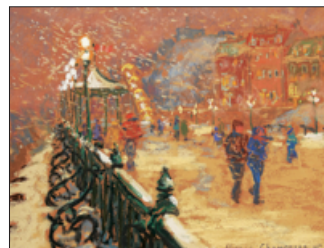
025 ■ ROD CHARLESWORTH
Autumn [Early Snow] Near Rock Creek oil on wood
 \$1,000/1,200 14x18 in. / 36x46 cm.



014 ■ RALPH WALLACE BURTON
Fall Country Side / Barns in the Fall oil on wood
 \$900/1,200 10.5x13.25 in. / 27x34 cm.



018 ■ CLAUDETTE CASTONGUAY
Souvenirs from the Beach acrylic on canvas
 \$1,000/1,500 24x35.75 in. / 61x91 cm.



022 ■ HORACE CHAMPAGNE
A Snowy, Blowy Evening pastel on paper
 \$600/800 7.75x9.5 in. / 20x24 cm.



026 ■ ROD CHARLESWORTH
Village Scene [Que.] oil on wood board
 \$800/1,000 12x16 in. / 30x41 cm.



015 ■ RALPH WALLACE BURTON
Barns in Winter, Quebec oil on wood board
 \$700/900 10.5x13.5 in. / 27x34 cm.



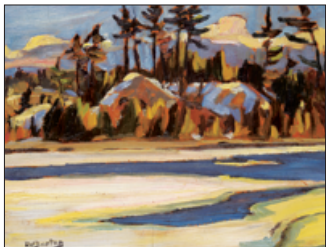
019 ■ HORACE CHAMPAGNE
The Antique Store, Quebec City pastel on paper
 \$2,500/3,500 15.5x19.5 in. / 39x50 cm.



023 ■ ROD CHARLESWORTH
Mystic and Emerald oil on canvas
 \$2,000/2,500 35.75x35.75 in. / 91x91 cm.



027 ■ STEVE COFFEY
Moon Cabin and Trees acrylic on canvas
 \$2,000/3,000 60x48 in. / 152x122 cm.



016 ■ RALPH WALLACE BURTON
Untitled - Break up on the River oil on wood
 \$700/900 10.5x13.5 in. / 27x34 cm.



020 ■ HORACE CHAMPAGNE
January Evening Near Ripon, Quebec pastel on paper
 \$800/1,200 17.25x23.25 in. / 44x59 cm.



024 ■ ROD CHARLESWORTH
Similkameen Blue oil on wood board
 \$1,200/1,500 16x20 in. / 41x51 cm.



028 ■ STEVE COFFEY
Summer Poles and Swimming Sky acrylic
 \$1,500/2,000 30x60 in. / 76x152 cm.



029 ■ ALAN CASWELL COLLIER
The Ragged Robe of Winter
 \$2,500/3,000

oil on wood board
 16x19.75 in. / 41x50 cm.



030 ■ ALAN CASWELL COLLIER
Cape Spear, Newfoundland oil on wood board
 \$1,500/2,000 12x16 in. / 30x41 cm.



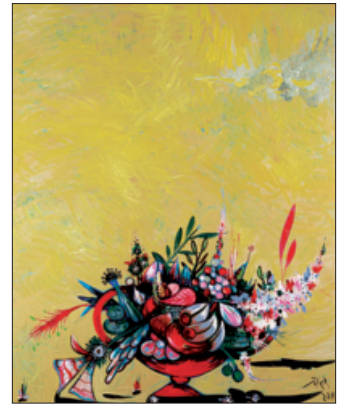
031 ■ RETA MADELINE COWLEY
Paul's Pasture, Ice Dugout, 1986 oil on wood
 \$1,200/1,500 9x12 in. / 23x30 cm.



033 ■ PATRICK DOUGLASS COX
Colour Study Sample tempera on wood board
 \$900/1,200 9x5.75 in. / 23x15 cm.



032 ■ PATRICK DOUGLASS COX
Study for Double Barrel tempera on wood board
 \$900/1,200 11.25x4.25 in. / 29x11 cm.



034 ■ TOLLER CRANSTON
Lemon Afternoon Tea, 2011 oil on canvas
 \$2,000/2,500 43.25x35.25 in. / 110x90 cm.



035 ■ DUNCAN CROCKFORD
Ghost River Country oil on canvas
 \$1,500/2,000 24x30 in. / 61x76 cm.



036 ■ DUNCAN CROCKFORD
Breakup on the Sheep River oil on canvas
 \$1,200/1,500 18x24 in. / 46x61 cm.



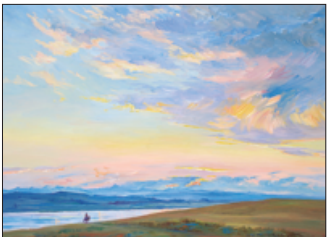
037 ■ **DUNCAN CROCKFORD**
Untitled - Waves on a Rocky Shore oil on canvas
 \$1,200/1,500 18x24.25 in. / 46x62 cm.



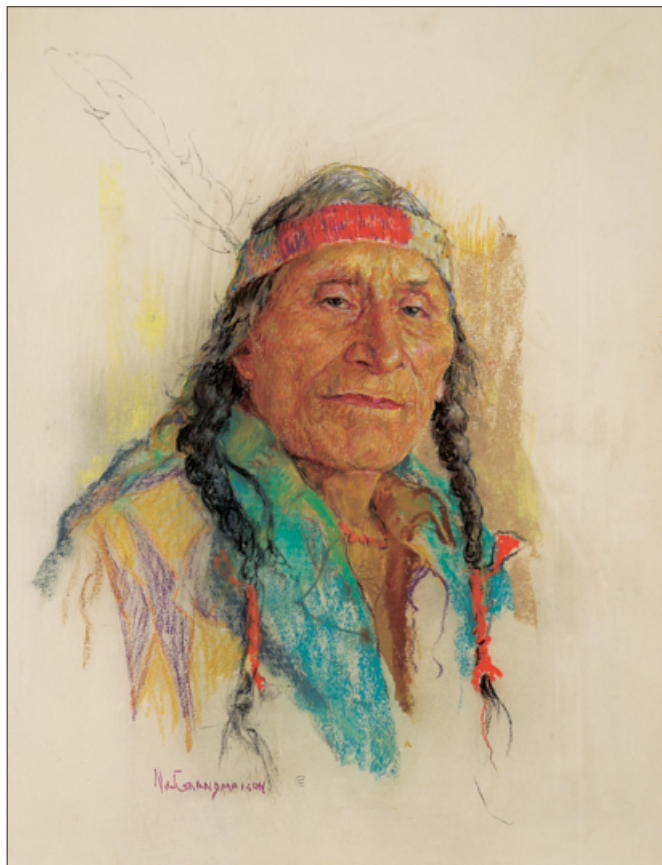
038 ■ **DUNCAN CROCKFORD**
Untitled - Lake's Edge oil on canvas
 \$1,000/1,200 16x20 in. / 41x51 cm.



039 ■ **DUNCAN CROCKFORD**
First Snow Lake Louise, Alberta oil on canvas
 \$1,000/1,500 16x20 in. / 41x51 cm.



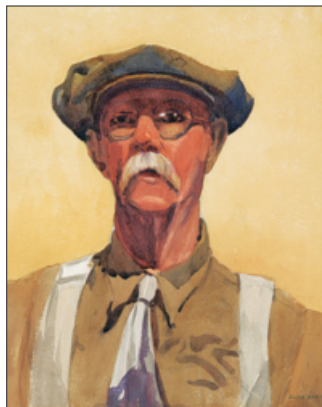
041 ■ **ORESTES [RICK] DE GRANDMAISON**
Sunset Skies [Alta.] oil on wood board
 \$2,500/3,500 18x21 in. / 46x53 cm.



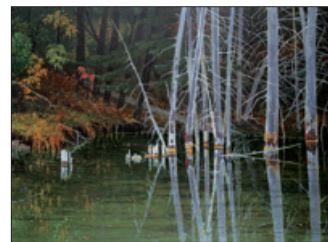
040 ■ **NICHOLAS DE GRANDMAISON**
Untitled - Stoney Indian
 \$20,000/30,000



042 ■ **ORESTES [RICK] DE GRANDMAISON**
Untitled - Boat Through the Mist oil on canvas
 \$1,000/1,500 18.75x24 in. / 48x61 cm.



043 ■ **JAMES DICHMONT**
Portrait of an Old Man, 1938 ca. watercolour
 \$800/1,000 15x12.25 in. / 38x31 cm.



044 ■ **WALTER DROHAN**
Mirror Pool oil on canvas
 \$3,000/4,000 34.75x46 in. / 88x117 cm.



045 ■ **MICHEL FORTIN**
La Chasse-Galerie painted mixed media sculpture
 \$1,500/2,000 24.25x30x18 in. / 62x76x46 cm.



046 ■ **JEAN FOSBROOKE**
Spirit of the Rockies III acrylic on canvas
 \$900/1,200 30x30 in. / 76x76 cm.



047 ■ **LILIANE FOURNIER**
Daffodils in Clay Pot oil on canvas
 \$900/1,200 24x30 in. / 61x76 cm.

pastel on paper
 21x16 in. / 53x41 cm.



048 ■ RICHARD AUDLEY FREEMAN
Foothills Round-Up oil on wood board
 \$1,500/2,000 22x30 in. / 56x76 cm.



052 ■ ROLAND GISSING
Autumn Near Exshaw oil on wood board
 \$1,200/1,500 12x15.75 in. / 30x40 cm.



056 ■ RON HEDRICK
Caribou Landscape oil on canvas
 \$2,500/3,500 30x40 in. / 76x102 cm.



060 ■ STEVE HOAR
The Rock Hopper bronze sculpture
 \$700/900 9.5x10x4.5 in. / 24x25x11 cm.



049 ■ ROBERT GENN
Design - Woodland Edge oil on wood board
 \$1,000/1,200 7.5x9.5 in. / 19x24 cm.



053 ■ ROLAND GISSING
Harvest Near Kent oil on canvas board
 \$1,000/1,200 9x12 in. / 23x30 cm.



057 ■ RON HEDRICK
Garden Walkway oil on canvas
 \$1,500/2,000 24x30 in. / 61x76 cm.



050 ■ ROBERT GENN
Bute Offskip II oil on canvas board
 \$800/1,000 5.75x8.75 in. / 15x22 cm.



054 ■ ROLAND GISSING
Untitled - Lake Louise watercolour on paper
 \$500/700 8.75x10.75 in. / 22x27 cm.



058 ■ RON HEDRICK
Another Run oil on paper board
 \$600/800 15.5x19.5 in. / 39x50 cm.



061 ■ FRANCIS HORNE, SR.
Tsonakwa, 2005 painted wood mask
 \$3,000/4,000 31x18x10 in. / 79x46x25 cm.



051 ■ ROLAND GISSING
September oil on canvas
 \$1,500/2,000 16x20 in. / 41x51 cm.



055 ■ SUE HEATHCOTE
Looking East mixed media on canvas board
 \$800/1,000 30x60 in. / 76x152 cm.



059 ■ STEVE HOAR
The Scout bronze sculpture
 \$2,500/3,000 18.75x16.5x6 in. / 48x42x15 cm.



062 ■ GEORGIA JARVIS
A Walking Plough oil on wood board
 \$2,000/2,500 18x24 in. / 46x61 cm.



063 ■ **GEORGIA JARVIS**
Fall Morning Mist oil on wood board
 \$1,200/1,500 16x24 in. / 41x61 cm.



066 ■ **FARQUHAR MCGILLIVRAY KNOWLES**
Evening on the Thames, 1892 watercolour on paper
 \$1,500/2,000 13.5x20.5 in. / 34x52 cm.



064 ■ **LOUISE LECOR KIROUAC**
Un Brin De Jasette En Passant, QC oil on canvas
 \$800/1,000 16x20 in. / 41x51 cm.



067 ■ **ALFRED CROCKER LEIGHTON**
Blackpool, Winchelsea watercolour on paper
 \$800/1,000 11.25x15.25 in. / 29x39 cm.



065 ■ **ANDREW KISS**
Untitled - Mountain Goats at Dusk oil on canvas
 \$900/1,200 20x12 in. / 51x30 cm.



068 ■ **ALFRED CROCKER LEIGHTON**
Bow Valley watercolour on paper
 \$600/800 7.25x10 in. / 18x25 cm.



069 ■ **LUKE ORTON LINDOE**
Shrinking Prairie Sloughs
 \$2,000/3,000

oil on wood board
 18x24 in. / 46x61 cm.



070 ■ **GEORGE LITTLECHILD**
Yumgwahss of Wakeman Sound mixed media
 \$800/1,200 29.5x29.75 in. / 75x76 cm.



071 ■ **JAMES [JIM] A. LOGAN**
Untitled - Dog Sled Racing acrylic on canvas
 \$2,500/3,500 30x40 in. / 76x102 cm.



072 ■ **JAMES [JIM] A. LOGAN**
The Women are at Bingo acrylic on canvas
 \$800/1,000 16x20 in. / 41x51 cm.

Visit our website for complete details on every lot including additional items to this sale.

www.levisauctions.com

Next auction: April 22, 2018



076 ■ HENRI LEOPOLD MASSON
Summer Gatineau, 1970
 \$4,000/5,000

oil on wood board
 24x30 in. / 61x76 cm.



073 ■ JOHN A. MACDONALD
Saint Mary's Lake oil on canvas
 \$3,500/4,500 48x48 in. / 122x122 cm.



075 ■ THOMAS MOWER MARTIN
Two Trees watercolour on paper
 \$600/800 8.75x7 in. / 22x18 cm.



074 ■ THOMAS MOWER MARTIN
Untitled - Pastoral Pathway oil on canvas
 \$1,200/1,500 18x24 in. / 46x61 cm.



077 ■ JANET MITCHELL
Winter Walk, Hillhurst watercolour on paper
 \$1,200/1,500 13.5x20.5 in. / 34x52 cm.



078 ■ JANET MITCHELL
Untitled - Walking Home After School watercolour
 \$1,200/1,500 13.25x20.25 in. / 34x51 cm.



079 ■ JANET MITCHELL
Untitled - Meal Time watercolour on paper
 \$1,200/1,500 15x21.75 in. / 38x55 cm.



080 ■ LEO MOL
Untitled - After the Bath, 1968 bronze sculpture
 \$2,500/3,500 15.5x4.5x3.5 in. / 39x11x9 cm.



081 ■ GABOR L. NAGY
Vase of Flowers at the Specks #1 oil on paper board
 \$700/900 29.5x22 in. / 75x56 cm.



082 ■ TONI ONLEY
Blue Hills, New Zealand, 1980
 \$3,000/4,000

oil on wood board
 20x24 in. / 51x61 cm.



083 ■ TONI ONLEY
Untitled - Ships in Harbour, 1947 watercolour
 \$700/900 11x13.5 in. / 28x34 cm.



084 ■ PAGE OUGH
Grizzly Bear and the Three Sisters oil on canvas
 \$2,000/3,000 48.25x48 in. / 123x122 cm.



085 ■ NEIL PATTERSON
Quiet Valley oil on canvas board
 \$1,500/2,000 23.75x29.75 in. / 60x76 cm.



086 ■ NEIL PATTERSON
Valley Ranch oil on canvas
 \$900/1,200 18x24 in. / 46x61 cm.



087 ■ WALTER JOSEPH PHILLIPS
Mount Rundle
 \$3,000/4,000

wood block on paper
 8x12.25 in. / 20x31 cm.



088 ■ WALTER JOSEPH PHILLIPS
The Waterfront, Alert Bay wood block on paper
 \$2,500/3,500 6.25x8.75 in. / 16x22 cm.



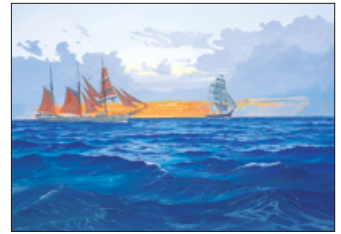
089 ■ WALTER JOSEPH PHILLIPS
Rime wood block on paper
 \$600/800 4.25x4.5 in. / 11x11 cm.



090 ■ DANIEL PLANTE
Un Reve D'Enfance oil on canvas
 \$1,500/2,000 23.75x29.75 in. / 60x76 cm.



091 ■ DANIEL PLANTE
Un Dessin D'Automne oil on canvas
 \$1,500/2,000 35.75x24.75 in. / 91x63 cm.



092 ■ TED RAFTERY
Interception at Sea oil on canvas
 \$900/1,200 26x36 in. / 66x91 cm.



093 ■ TED RAFTERY
Dawn on a Lee Shore oil on canvas
 \$900/1,200 24x36 in. / 61x91 cm.



094 ■ TED RAFTERY
Moonlight off Cebu oil on canvas
 \$800/1,000 24x30 in. / 61x76 cm.



095 ■ ALLEN SAPP
Bringing Home A Load of Wood acrylic on canvas
 \$3,000/3,500 24x36 in. / 61x91 cm.



096 ■ ALLEN SAPP
Untitled - Snow Day acrylic on canvas
 \$2,000/2,500 20x23.75 in. / 51x60 cm.



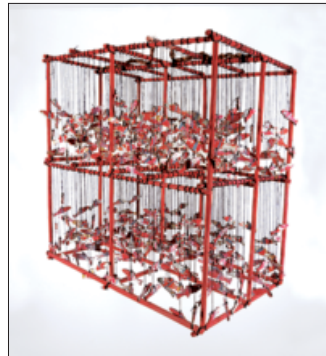
097 ■ ALLEN SAPP
I Have to Work While My Brothers Play acrylic
 \$1,500/2,800 16x19.75 in. / 41x50 cm.



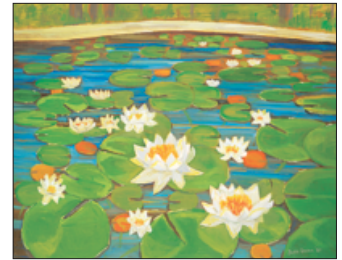
098 ■ ALLEN SAPP
Untitled - We Climb Trees acrylic on canvas
 \$1,200/1,500 11.75x11.75 in. / 30x30 cm.



100 ■ ARTHUR SHILLING
Ojibwe Girl, 1977 oil on canvas
 \$6,000/8,000 18x14 in. / 46x36 cm.



099 ■ RUPERT SCOW
Salmon Rattle hanging sculpture
 \$1,500/2,000 37x36x24 in. / 94x91x61 cm.



102 ■ JOHN SNOW
Water Lillies oil on canvas
 \$2,500/3,500 24x30 in. / 61x76 cm.



103 ■ RAYMOND THERIAULT
The Second Cup oil on canvas
 \$2,000/2,500 30.25x67 in. / 77x170 cm.



104 ■ CHAN TINYAN
The Grand Grand Sails oil on canvas
 \$1,200/1,500 24x30 in. / 61x76 cm.



105 ■ CLAUDE TREMBLAY
Un Temps Pour S'arreter oil on canvas
 \$600/800 20x20 in. / 51x51 cm.



101 ■ KEITH COMOCK SMITH
Untitled - Lake O'Hara oil on wood board
 \$700/900 7.5x9.5 in. / 19x24 cm.



106 ■ CHARLES JONES WAY
Forest, 1909 oil on canvas board
\$1,000/1,200 12.75x9.5 in. / 32x24 cm.



107 ■ CHARLES JONES WAY
Study of an Alpine Track oil on canvas board
\$1,000/1,200 7.5x11 in. / 19x28 cm.

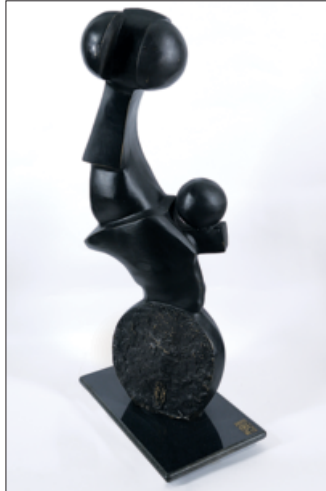


108 ■ WILLIAM [BILL] H. WEBB
Afternoon Sunlight oil on canvas
\$2,500/3,500 48x60 in. / 122x152 cm.



109 ■ VILEM ZACH
Sioux Warrior bronze sculpture
\$2,500/3,000 15x9.5x5.5 in. / 38x24x14 cm.

CONTEMPORARY ART
LOTS 201 - 234



201 ■ FAHRI ALDIN
Venus bronze sculpture
\$2,000/3,000 40.5x15x10 in. / 103x38x25 cm.



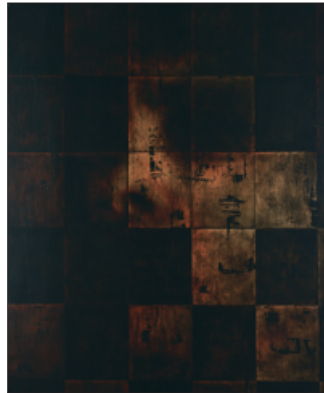
202 ■ FAHRI ALDIN
Untitled - The Orchestra Pit bronze sculpture
\$1,000/1,500 9.5x22.5x7.5 in. / 24x57x19 cm.



203 ■ KIM BRUCE
Open Toe encaustic with needles, sculpture
\$700/900 5.5x7x3 in. / 14x18x8 cm.



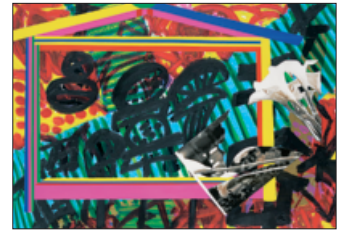
204 ■ KIM BRUCE
Laced encaustic, steel and string sculpture
\$700/900 4.5x6.5x2.25 in. / 11x17x6 cm.



205 ■ GREG EDMONSON
Trace XI [11] oil on canvas
\$1,500/2,000 31.5x26.25 in. / 80x67 cm.



206 ■ MAUREEN ENNS
Shinjuku Ku, 1986 mixed media on paper
\$1,200/1,500 28x22 in. / 71x56 cm.



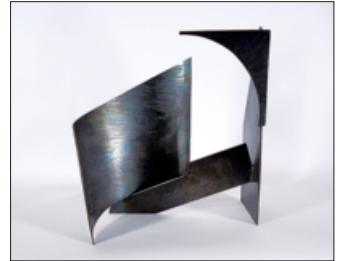
207 ■ MAUREEN ENNS
Off the Shelf, 1986 mixed media on paper
\$1,200/1,500 21x29.75 in. / 53x76 cm.



208 ■ JOSEPH [JOE] FAFARD
Cattle 4 / 3 bronze sculpture
\$2,000/2,500 4x6.5x2.75 in. / 10x17x7 cm.



209 ■ JOSEPH [JOE] FAFARD
Cattle 8 / 1 bronze sculpture
\$2,000/2,500 4.5x6.5x3 in. / 11x17x8 cm.



210 ■ EDWARD FALKENBERG
Untitled - Curves steel sculpture
\$800/1,200 18.75x17.5x8 in. / 48x44x20 cm.



211 ■ EDWARD FALKENBERG
Untitled - Abstract Construction steel sculpture
\$500/700 7.25x21.25x6 in. / 18x54x15 cm.



212 ■ JONATHAN FORREST
Hip Check, 2004
\$2,500/3,500

acrylic on canvas
67x48.25 in. / 170x123 cm.



214 ■ PAUL FOURNIER
Yellow Note, 1978
\$900/1,200

monoprint and acrylic
24x35 in. / 61x89 cm.

213 ■ JONATHAN FORREST
Lift, 2004
\$2,500/3,500

acrylic on canvas
67x48.25 in. / 170x123 cm.



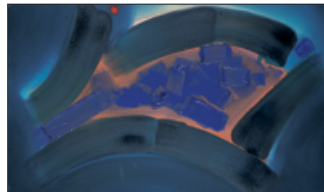
215 ■ RED GROOMS
Picasso, 1997
\$3,000/5,000

mixed media sculpture
22.5x23.5x13.5 in. / 57x60x34 cm.



216 ■ GRANT LEIER
Martinis and Roses
\$1,200/1,500

acrylic on canvas
29.75x29.75 in. / 76x76 cm.



217 ■ PHILLIP MANN
Untitled - Blue Swoosh
\$900/1,200

acrylic on canvas
33.75x57.75 in. / 86x147 cm.



218 ■ ARTHUR FORTESCUE MCKAY
Brown Mandala on Black, 1967
\$3,000/4,000

enamel on wood
24x23.75 in. / 61x60 cm.



219 ■ SHEILA NORGATE
Looking for Themselves
\$900/1,200

acrylic on canvas
30x40 in. / 76x102 cm.



220 ■ MATT PETLEY-JONES
Red Square
\$2,500/3,500

acrylic on canvas
60x48 in. / 152x122 cm.



221 ■ MATT PETLEY-JONES
Angular Colour
\$1,500/2,000

acrylic on canvas
24x36 in. / 61x91 cm.



222 ■ JEAN RICHARDS
Abstract
\$600/800

oil on paper board
16x20 in. / 41x51 cm.



223 ■ JEAN RICHARDS
Stencil Fragments mixed media on board
 \$600/800 15x23.5 in. / 38x60 cm.



224 ■ JEAN RICHARDS
Spring Comes to the Wetlands acrylic on wood
 \$600/700 24x30 in. / 61x76 cm.



225 ■ JACK LEONARD SHADBOLT
Untitled - Strata 1967 acrylic on paper
 \$2,000/2,500 39.75x26 in. / 101x66 cm.



226 ■ BEWABON SHILLING
Black River #18 oil on canvas
 \$1,000/1,200 18x18 in. / 46x46 cm.



227 ■ BEWABON SHILLING
Cedar Series #3 oil on canvas
 \$600/700 10x10 in. / 25x25 cm.



231 ■ HAROLD BARLING TOWN
Autographic Black and Pink Abstract monoprint
 \$1,500/2,000 19.75x15.75 in. / 50x40 cm.



232 ■ TONY UROUHART
The Homestretch, 1956 oil on canvas
 \$3,000/4,000 23.75x29.75 in. / 60x76 cm.



228 ■ HERBERT SIEBNER
Body Beach, Punta del Este
 \$4,000/6,000

mixed media on wood board
 18x22.5 in. / 46x57 cm.



229 ■ HERBERT SIEBNER
The Night, 1956 monoprint on paper board
 \$3,000/5,000 15x21.5 in. / 38x55 cm.



230 ■ HERBERT SIEBNER
Untitled - Still Life, 1950 oil on paper board
 \$1,500/2,500 9.5x19.25 in. / 24x49 cm.



233 ■ RONALD YORK WILSON
Facade acrylic on canvas
 \$2,500/3,000 24x32 in. / 61x81 cm.



234 ■ RONALD YORK WILSON
Colour of Bach gouache on paper
 \$1,200/1,500 19x24.75 in. / 48x63 cm.

INTERNATIONAL ART
LOTS 301 - 325



301 ■ ATTRIBUTED TO C.W. BOUTER
Untitled - Rocking the Cradle oil on canvas
\$800/1,200 19.75x23.75 in. / 50x60 cm.



302 ■ CHARLES FREDERICK BUCKLEY
June in Borrowdale Cumberland watercolour
\$800/1,000 28.25x38.25 in. / 72x97 cm.



303 ■ JAY CONTWAY
Champion, Calgary Stampede bronze sculpture
\$600/700 13.75x11.75x6.5 in. / 35x30x17 cm.



307 ■ PAUL GUSTAV FISCHER
Untitled - Watering the Horses watercolour
\$2,000/2,500 6x7.5 in. / 15x19 cm.



304 ■ ROGER DE LA FRESNAYE
Untitled - Male Nude graphite on paper
\$900/1,200 24x12.5 in. / 61x32 cm.



305 ■ ATTRIBUTED TO PAUL DE LONGPRE
Untitled - Bluebells and Dunes, 1896 oil on paper
\$2,000/3,000 22x25 in. / 56x64 cm.



308 ■ HARALD FREDERICK FOSS
Road Through the Hills, 1909 oil on canvas
\$2,500/3,500 41.75x62.25 in. / 106x158 cm.



306 ■ ATTRIBUTED TO NARCISSE VIRGILE DIAZ DE LA PENNA
Woman in Fontainebleau Forest [Ramasseuse de Fagos, dans la Foret de Fontainebleau] oil on canvas
\$15,000/25,000 42.5x33 in. / 108x84 cm.



307.1 ■ FRANK FELLER
Untitled - Dreaming of home oil on canvas
\$3,000/4,000 40.5x30.5 in. / 103x77 cm.



309 ■ ROD FREDERICK
Untitled - Fox Study acrylic on paper
\$1,200/1,500 6.25x7.5 in. / 16x19 cm.



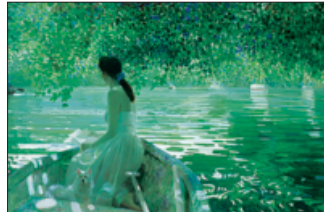
310 ■ TERRANCE GUARDIPEE
Shooting Arrows mixed media on paper
 \$1,200/1,500 17.75x15.5 in. / 45x39 cm.



311 ■ TERRANCE GUARDIPEE
Colourful Horse and Rider mixed media
 \$1,200/1,500 10.25x15.5 in. / 26x39 cm.



312 ■ ATTRIBUTED TO J.F. HERRING II
Untitled - Horse and Hounds oil on canvas
 \$900/1,200 15x19.75 in. / 38x50 cm.



313 ■ ZHONG-YANG HUANG
Farewell oil on wood board
 \$2,000/3,000 24x36 in. / 61x91 cm.



314 ■ RAMON KELLEY
Christina [Nude] pastel and watercolour
 \$1,000/1,500 10x7.75 in. / 25x20 cm.



315 ■ RAMON KELLEY
Market at Tepoztlán, Mexico oil on paper board
 \$1,000/1,500 8.5x14 in. / 22x36 cm.



316 ■ JACK [JAC] ELMO KING
Untitled - Packing to Higher Ground oil on wood
 \$4,000/5,000 20x16 in. / 51x41 cm.



317 ■ LORENZO PALMER LATIMER
Late Afternoon Light, 1922 watercolour on paper
 \$1,000/1,500 17x11.25 in. / 43x29 cm.



318 ■ WILLIAM OWEN
Returning from Market watercolour on paper
 \$4,000/5,000 27.5x20.5 in. / 70x52 cm.



319 ■ JAMES REID
Untitled - Off to Market oil on wood board
 \$2,000/2,500 19.5x23.5 in. / 50x60 cm.



320 ■ MARTY RICKS
Field in the High Country oil on canvas
 \$5,000/7,000 48x60 in. / 122x152 cm.



321 ■ GARY LYNN ROBERTS
Untitled - Frontier Town oil on canvas
 \$2,500/3,500 12x16 in. / 30x41 cm.



322 ■ CARL CLEMENS MORITZ RUNGUIS
Above the Canyon, 1950 oil on canvas board
 \$8,000/10,000 9x11 in. / 23x28 cm.



323 ■ CAROUSEL HORSE SCHOOL
'Grand Jubilee' Carousel Horse, 1917 ca. mixed media
 \$3,000/4,000 32x52x11 in. / 81x132x28 cm.



324 ■ CARL J. WEHNER
Good Men in Bad Lands oil on canvas
 \$1,500/2,000 26.25x37 in. / 67x94 cm.



325 ■ HIROSHI YOSHIDA
Moraine Lake, 1925 wood block on paper
 \$900/1,200 14.5x9.5 in. / 37x24 cm.

4th SESSION
 LOTS 401 - 460



401 ■ MILTON ACHTIMICHUK
Untitled - Bull Moose in Autumn oil on canvas
 \$500/700 15.75x20 in. / 40x51 cm.



402 ■ JOSEPH [JOE] FERENC ACS
Cattails Near a Slough [Alta.] acrylic on wood board
 \$400/600 11.75x19.75 in. / 30x50 cm.



403 ■ TERRY ANANNY
Passage du Gaspesie acrylic on canvas
 \$500/700 10x12 in. / 25x30 cm.



404 ■ TERRY ANANNY
Untitled - Boiling the Sap acrylic on canvas
 \$500/700 10x12 in. / 25x30 cm.



405 ■ MERV BRANDEL
January Alder oil on wood board
 \$800/1,000 16x20 in. / 41x51 cm.



406 ■ RETA MADELINE COWLEY
Untitled - Summer Fields watercolour on paper
 \$500/600 14.25x21 in. / 36x53 cm.



407 ■ PATRICK DOUGLASS COX
Springview Sketch [Gooseman] graphite on paper
 \$300/400 8.5x6.75 in. / 22x17 cm.



408 ■ PATRICK DOUGLASS COX
Honeysuckle graphite on paper
 \$300/400 4.5x8 in. / 11x20 cm.



409 ■ DONALD HOUSTON CURLEY
Slow Stream, Hope BC oil on canvas board
 \$400/600 12x16 in. / 30x41 cm.



410 ■ C. DE MELOTTE
Untitled - Kitchen Still Life, 1879 oil on canvas
 \$500/700 21.5x26.5 in. / 55x67 cm.



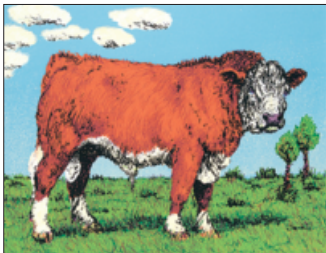
411 ■ WILLIAM [BILL] DUMA
Bevelled Window acrylic on canvas board
 \$600/800 16x12 in. / 41x30 cm.



412 ■ ALLAN DUNFIELD
Hamilton Marsh Autumn oil on canvas
\$300/400 11x14 in. / 28x36 cm.



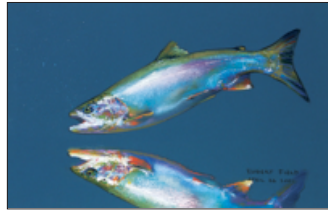
413 ■ JOSEPH [JOE] FAFARD
DC Neuf silkscreen on paper
\$400/500 25.75x18 in. / 65x46 cm.



414 ■ JOSEPH [JOE] FAFARD
Sonny silkscreen on paper
\$300/400 14.5x18.25 in. / 37x46 cm.



415 ■ ROBERT [FISH] FIELD
Storm Waves, Broughton Strait pastel on paper
\$400/500 12.25x19 in. / 31x48 cm.



416 ■ ROBERT [FISH] FIELD
Untitled - Reflection pastel on paper
\$400/500 12x19.25 in. / 30x49 cm.



417 ■ RICHARD AUDLEY FREEMAN
Sunup oil on wood board
\$500/700 10x12 in. / 25x30 cm.



418 ■ RICHARD AUDLEY FREEMAN
Prospector and Friend oil on wood board
\$400/600 10x8 in. / 25x20 cm.



419 ■ PAUL F. GAUTHIER
Bell Rapids, Madawaska River oil on wood board
\$600/800 11.5x14.25 in. / 29x36 cm.



420 ■ ROBERT GENN
Untitled - From Painter's Lodge watercolour
\$250/350 7.25x9.5 in. / 18x24 cm.



421 ■ FRANCINE GRAVEL
Contemplation, 1982 mixed media on canvas
\$700/900 30x24 in. / 76x61 cm.



422 ■ FRANCINE GRAVEL
Serenade d'Ete, 1983 mixed media on canvas
\$600/800 20x24.25 in. / 51x62 cm.



423 ■ BOBS HAWORTH
Morning Mist acrylic on wood board
\$600/700 22x30.5 in. / 56x77 cm.



424 ■ GEORGE A. HORVATH
Indian Chief pastel on paper
\$500/700 23x17 in. / 58x43 cm.



425 ■ OLUF K. ALEXANDER HOST
Untitled - Gathering at Bornholm lithograph
 \$300/400 22x28.25 in. / 56x72 cm.



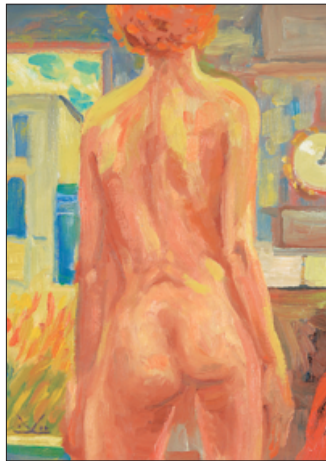
426 ■ ROBERT HURLEY
Day Break on the Prairies, 1968 watercolour
 \$400/500 10.25x14.5 in. / 26x37 cm.



427 ■ ROBERT HURLEY
Grain Elevators in Winter, 1967 watercolour
 \$400/500 10x14.5 in. / 25x37 cm.



428 ■ ROBERT HURLEY
Lebret, Saskatchewan, 1960 watercolour on paper
 \$400/500 10x14.5 in. / 25x37 cm.



429 ■ ILLINGWORTH KERR
[Figure] Study, 1987 oil on wood board
 \$800/1,000 15.75x12 in. / 40x30 cm.



430 ■ ILLINGWORTH KERR
... Bouganvillea, Papaya... oil on wood board
 \$500/700 16x11.75 in. / 41x30 cm.



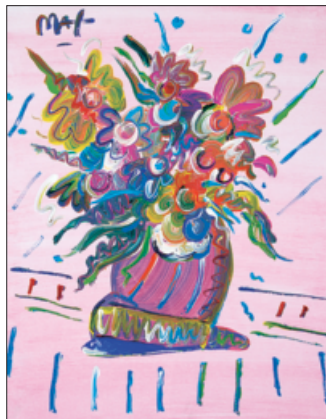
431 ■ ILLINGWORTH KERR
Turner Valley Nocture silkscreen on paper
 \$300/350 12x16 in. / 30x41 cm.



432 ■ DONNA KING
Alberta Country acrylic on paper board
 \$700/900 7.75x17.75 in. / 20x45 cm.



433 ■ HENRI MATISSE
Untitled - Floral Still Life lithograph on paper
 \$500/600 11.5x9 in. / 29x23 cm.



434 ■ PETER MAX
Untitled - Vase of Flowers on Pink oil on canvas
 \$1,000/1,500 19.5x15.5 in. / 50x39 cm.



435 ■ CATHERINE MOFFAT
Bowling Lemons watercolour on paper
 \$400/600 10.25x12 in. / 26x30 cm.



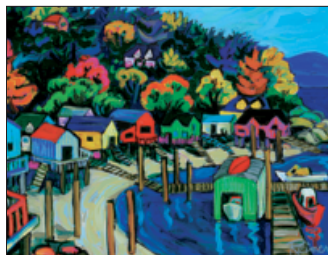
436 ■ BRUCE MUIR
Gull's View acrylic on wood board
 \$700/900 31.5x23.25 in. / 80x59 cm.



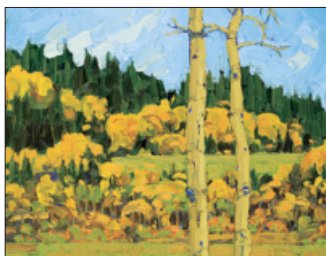
437 ■ MARION NICOLL
Untitled - View of Our Ranch watercolour on paper
 \$500/700 10.25x13.75 in. / 26x35 cm.



438 ■ PETER X. O'BRIEN
Untitled - Where's He Going? watercolour
\$500/600 13.75x21.5 in. / 35x55 cm.



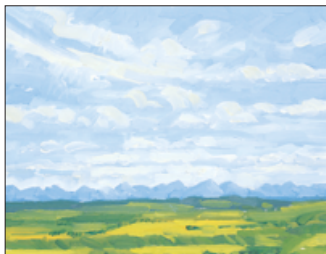
442 ■ CHRISTINE REIMER
Cowichan Bay Boat Houses acrylic on canvas
\$600/800 16x20 in. / 41x51 cm.



439 ■ BILL PARKER
Two Aspens oil on wood board
\$900/1,200 14.5x18 in. / 37x46 cm.



443 ■ GEORGES ROGY
Untitled - View of Ostend oil on canvas
\$700/900 19x25 in. / 48x64 cm.



440 ■ BILL PARKER
West of Calgary oil on wood board
\$800/1,000 12x15 in. / 30x38 cm.



444 ■ JOSEP DOMENECH SANCHEZ
Untitled - Profile of a Nude acrylic on canvas
\$500/700 18x18 in. / 46x46 cm.



441 ■ JACQUES POIRIER
Sous le Vent du Large oil on canvas
\$600/800 16x20 in. / 41x51 cm.



445 ■ JOSEP DOMENECH SANCHEZ
Untitled - Pearl Earing acrylic on canvas
\$500/700 19.75x11.25 in. / 50x29 cm.



446 ■ HUDSON RIVER SCHOOL
Untitled - Afternoon by the River oil on canvas
\$500/700 14.5x20.25 in. / 37x51 cm.



447 ■ RUSSIAN SCHOOL
Untitled - Russian Icon oil on panel
\$500/700 15x11.75 in. / 38x30 cm.



448 ■ HERBERT SIEBNER
Berlin, Wilmerdorf, 1949 watercolour on paper
\$400/500 7.5x9.25 in. / 19x23 cm.



449 ■ HERBERT SIEBNER
The End of the Line, 1964 lithograph on paper
\$300/350 4.5x7 in. / 11x18 cm.



450 ■ JOHN SNOW
Cineraria, 1951 wood block on paper
\$300/400 12.25x11 in. / 31x28 cm.



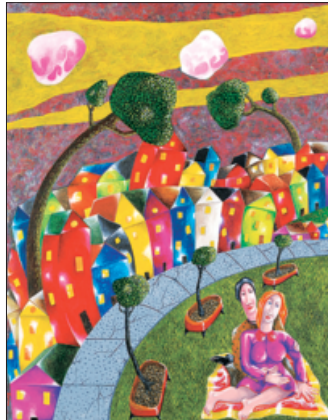
451 ■ JOHN SNOW
Refugee, 1949 etching on paper
\$200/250 6.75x4.75 in. / 17x12 cm.



452 ■ JOHN SNOW
Adra lithograph on paper
\$200/250 9.75x11.75 in. / 25x30 cm.



453 ■ FRED SPINA
3 Birds and Snake After Lunch acrylic on canvas
\$800/1,000 13.75x17.75 in. / 35x45 cm.



454 ■ FRED SPINA
Picnic in the Park acrylic on canvas board
\$700/900 20.25x16 in. / 51x41 cm.



455 ■ RICK TAYLOR
Set Wings bronze sculpture
\$600/700 8.75x15x11.5 in. / 22x38x29 cm.



456 ■ WILLI [WILLY] ULFIG
Waterfront Town, 1960 watercolour on paper
\$500/700 13x18.75 in. / 33x48 cm.



457 ■ WILLI [WILLY] ULFIG
Along the Fence, 1969 watercolour on paper
\$500/700 13x18.5 in. / 33x47 cm.



458 ■ WILLI [WILLY] ULFIG
Abstract Rooftops watercolour on paper
\$500/700 12x19 in. / 30x48 cm.



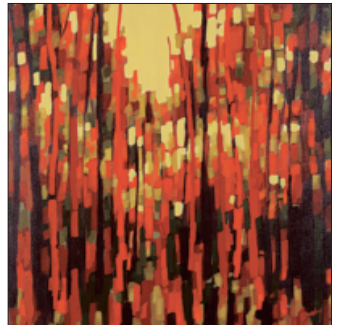
459 ■ WILLI [WILLY] ULFIG
Colourful Neighbourhood, 1969 watercolour
\$500/700 17.5x16.75 in. / 44x43 cm.



460 ■ DOROTHY WILLIS
The Lamp oil on paper
\$400/600 24.25x18.25 in. / 62x46 cm.



461 ■ DOROTHY WILLIS
Men Leaving the Cage, Cadomlin Alta mixed media
\$400/600 25.25x19.5 in. / 64x50 cm.



462 ■ DIANA RAE ZASADNY
Imagined Forest acrylic on canvas
\$500/600 24x24 in. / 61x61 cm.

LIVE AUCTION INDEX

401	Achtmichuk; Milton	040	de Grandmaison; Nicholas	423	Haworth; Bobs Cogill
402	Acs; Joseph [Joe] Ferenc	041-042	de Grandmaison; Orestes [Rick]	055	Heathcote; Sue
201-202	Aldin; Fahri	304	de la Fresnaye; Roger	056-058	Hedrick; Ron
001-002	Alexander; David T.	305	De Longpre; Attributed to Paul	312	Herring II; Attributed to John F.
403-404	Ananny; Terry	410	De Melotte; C.	059-060	Hoar; Steve
003	Andrews; Sybil	306	Diaz de la Pena; Attributed to Narcisse	061	Horne, Sr.; Francis
004	Bedard; Pierre	043	Dichmont; James	424	Horvath; George A.
005	Bird; Cameron	044	Drohan; Walter	425	Host; Oluf K. Alexander
006	Blackwood; David Lloyd	411	Duma; William [Bill]	313	Huang; Zhong-Yang
007	Bobak; Molly Lamb	412	Dunfield; Allan	426-428	Hurley; Robert Newton
008-009	Bott; Nicholas J.			062-063	Jarvis; Georgia
301	Bouter; Attributed to Cornelius Wouter	205	Edmonson; Greg		
405	Brandel; Merv	206-207	Enns; Maureen	314-315	Kelley; Ramon
010	Brown; Annora	208-209	Fafard; Joseph [Joe]	429-431	Kerr; Illingworth Holey
203-204	Bruce; Kim	413-414	Fafard; Joseph [Joe]	432	King; Donna
302	Buckley; Charles Frederick	210-211	Falkenberg; Edward George	316	King; Jack [Jac] Elmo
011-013	Burrow; John H.	307.1	Feller; Frank	064	Kirouac; Louise Lecor
014-016	Burton; Ralph Wallace	415-416	Field; Robert [Fish]	065	Kiss; Andrew
		307	Fischer; Paul Gustav	066	Knowles; Farquhar
017	Carr; M. Emily	212-213	Forrest; Jonathan	317	Latimer; Lorenzo Palmer
018	Castonguay; Claudette	045	Fortin; Michel	216	Leier; Grant
019-022	Champagne; Horace	046	Fosbrooke; Jean	067-068	Leighton; Alfred Crocker
023-026	Charlesworth; Rod	308	Foss; Harald Frederick	069	Lindoe; Luke Orton
027-028	Coffey; Steve	047	Fournier; Liliane	070	Littlechild; George
029-030	Collier; Alan Caswell	214	Fournier; Paul	071-072	Logan; James [Jim] A.
303	Contway; Jay	309	Frederick; Rod		
031; 406	Cowley; Reta Madeline	048;	Freeman; Richard Audley	073	MacDonald; John A.
032-033	Cox; Patrick Douglass	417-418	Freeman; Richard Audley	217	Mann; Phillip
407-408	Cox; Patrick Douglass			074-075	Martin; Thomas Mower
034	Cranston; Toller	419	Gauthier; Paul F.	076	Masson; Henri Leopold
035-039	Crockford; Duncan Mackinnon	049-050;	Genn; Robert	433	Matisse; Henri
409	Curley; Donald Houston	420	Genn; Robert	434	Max; Peter
		051-054	Gissing; Roland	218	McKay; Arthur
		421-422	Gravel; Francine	077-079	Mitchell; Janet
		215	Grooms; Red	435	Moffat; Catherine
		310-311	Guardipee; Terrance	080	Mol; Leo
				436	Muir; Bruce

081	Nagy; Gabor L.	455	Taylor; Rick
437	Nicoll; Marion Florence	103	Therault; Raymond
219	Norgate; Sheila	104	TinYan; Chan
		231	Town; Harold Barling
438	O'Brien; Peter X.	105	Tremblay; Claude
082-083	Onley; Toni		
084	Ough; Page	456-459	Ulfig; Willi [Willy]
318	Owen; William	232	Urquhart; Tony
439-440	Parker; Bill	106-107	Way; Charles Jones
085-086	Patterson; Neil	108	Webb; William [Bill] H.
220-221	Petley-Jones; Matt	324	Wehner; Carl J.
087-089	Phillips; Walter Joseph	460-461	Willis; Dorothy Henzell
090-091	Plante; Daniel	233-234	Wilson; Ronald York
441	Poirier; Jacques		
		325	Yoshida; Hiroshi
092-094	Raftery; Ted		
319	Reid; James	109	Zach; Vilem
442	Reimer; Christine	462	Zasadny; Diana Rae
222-224	Richards; Edith Jean		
320	Ricks; Marty		
321	Roberts; Gary Lynn		
443	Rogy; Georges		
322	Rungius; Carl		
444-445	Sanchez; Josep Domenech		
095-098	Sapp; Allen		
323	School; Carousel Horse		
446	School; Hudson River		
447	School; Russian		
099	Scow; Rupert		
225	Shadbolt; Jack Leonard		
100	Shilling; Arthur		
226-227	Shilling; Bewabon		
228-230	Siebner; Herbert		
448-449	Siebner; Herbert		
101	Smith; Keith Comock		
102;	Snow; John		
450-452	Snow; John		
453-454	Spina; Fred		

Visit our website for complete details on every lot including additional items to this sale.

www.levisauctions.com

Next auction: April 22, 2018

LEVIS

FINE ART AUCTIONS & APPRAISALS

1739 10 Avenue SW

Calgary AB T3C 0K1

