



214

Weston; William
Hope B.C., 1941
oil on panel

FINE ART AUCTION

MONDAY, APRIL 26, 1993 AT 7:00 P.M.

AT



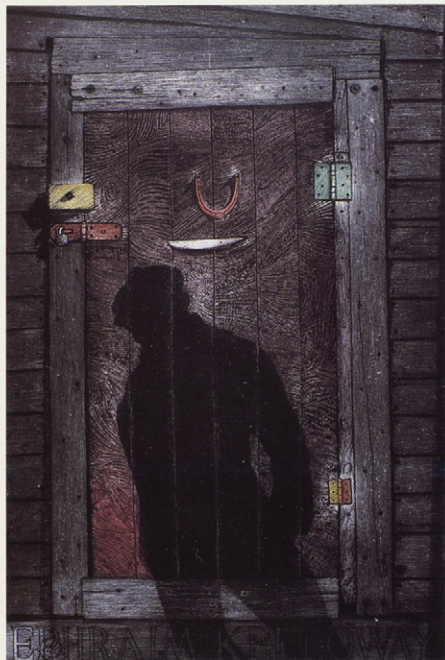
FORT CALGARY HISTORICAL PARK
750 9 AVENUE S.E.
CALGARY, ALBERTA

LEVIS

FINE ART AUCTIONS & APPRAISALS

A DIVISION OF ARTBANK INC.

#128, 1711 - 10 AVENUE S.W., CALGARY, ALBERTA T3C 0K1 TEL: (403) 541-9099 FAX: (403) 547-9097



17

Blackwood; David Lloyd
Passing Shadow
coloured etching on paper



39

Cresswell; William Nichol
Untitled - Stormy Seas
watercolour on paper



40

Crockford; Duncan
The Banff Valley, Alberta
oil on canvas



46

Dzubas; Friedel
Untitled
lithograph on paper



55

Fenton; Terry
Down the Shute
oil on masonite

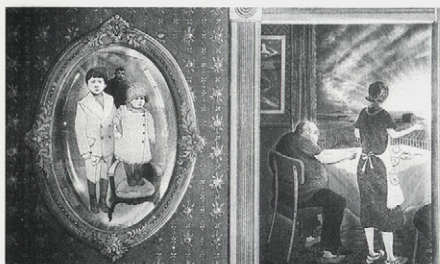


67

Gissing; Roland
Winter Landscape, Ghost River
oil on canvas



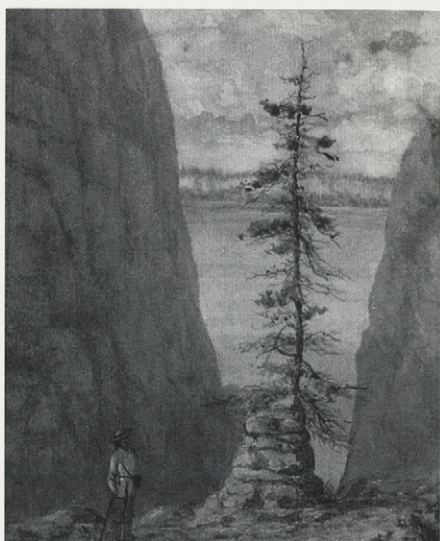
1 Boorne & May
Untitled - The Alexander Block, Calgary
black and white photograph



18 Blackwood; David Lloyd
Edward and Molly
coloured etching on paper



3 Noble; George
Trappers Shack
hand-coloured black and white photograph



8 Armstrong; William
Untitled - Lake Superior
watercolour on paper



28 Caddy; John Herbert
Untitled - Thousand Islands
watercolour on paper



14 Bellefleur; Leon
Rocambolesque
lithograph on paper



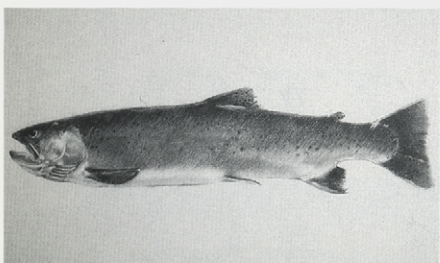
31

Christofferson; Gerda
Self Portrait
oil on canvas board



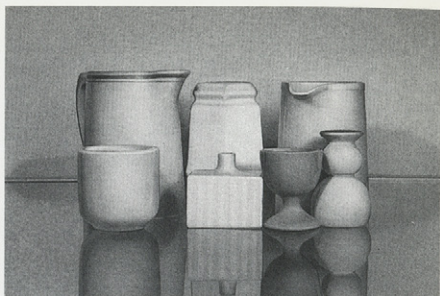
33

Cosgrove; Stanley Morel
Untitled - Nude
conte on paper



34

Cowin; Jack L.
Untitled - Cutthroat Trout
pastel on paper



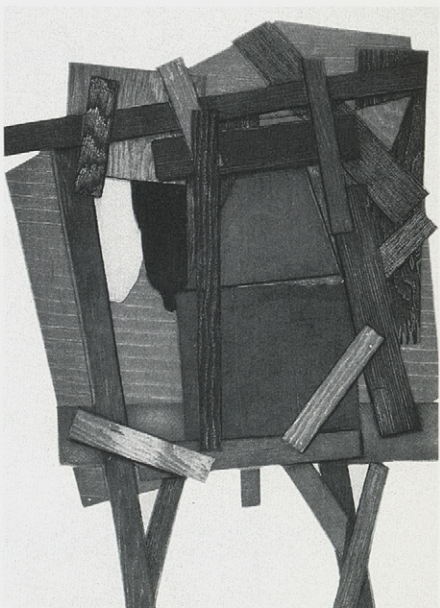
43

Davis; Richard
New Ceramics
pencil on paper



44

Duma; William
Summer Reflections
oil on canvas board



49

Esler; John Kenneth
Summer House III
etching on paper



69

Grandmaison; Orestes de
Elevators at Morningside
oil on masonite



81

Kasyn; John
Near Bartlett Ave.
oil on masonite



77

Innes; John
Summer Snow
oil on canvas



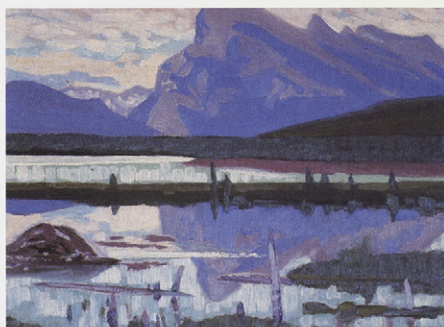
83

Kerr; Illingworth
The Creek at John Ware's Ranch
oil on canvas board



78

Jacobi; Otto
View of a Cabin Near a River
watercolour on paper



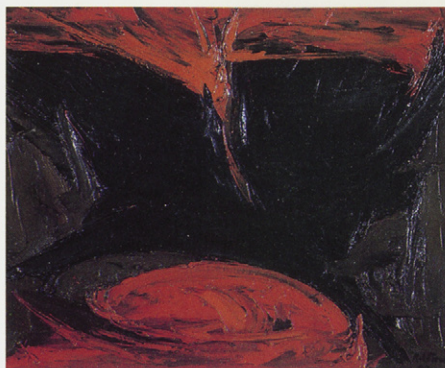
85

Kerr; Illingworth
Mt. Rundle from Vermilion Lake
oil on masonite



90

Knowles; Dorothy
Grey Mountain
acrylic on canvas



99

Letendre; Rita
Orion
oil on canvas



91

Knowles; Dorothy
Landscape with Bulrushes
acrylic on canvas



100

Lindner; Ernest
Untitled - Bodil, The Artist's Wife
oil on canvas board



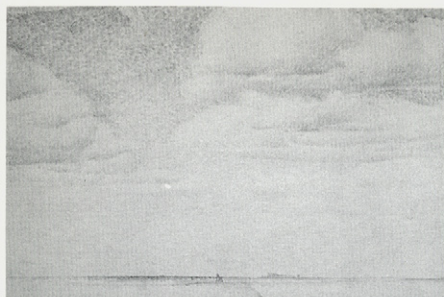
95

Langevin; Claude
A L'Abandon
oil on canvas



112

May; Henrietta Mabel
Fishing Boats in Harbour
oil on paper board mounted on board



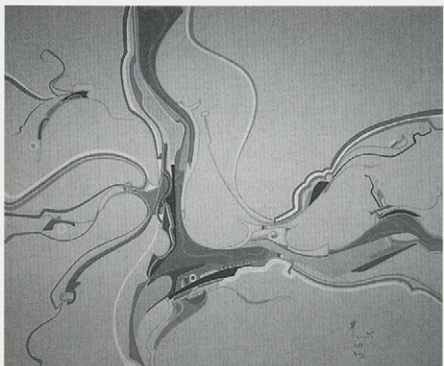
58

FitzGerald; Lionel LeMoine
Untitled
pencil on paper



60

Geesick; Robert Kakay
A Great Vision
mixed media on paper



79

Janvier; Alex
Shoreline Existence
acrylic on canvas



72

Grooms; Red
Bazille
etching on paper



84

Kerr; Illingworth
Night, Aldersyde, Alta.
oil on canvas board



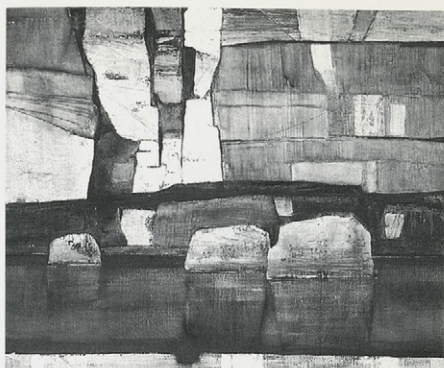
93

Kunichika; Toyohara
Kabuki Scene with Female Archer
coloured triptych woodblock on paper



98

Lansonius; Susanne
Dancing Warriors
oil on canvas



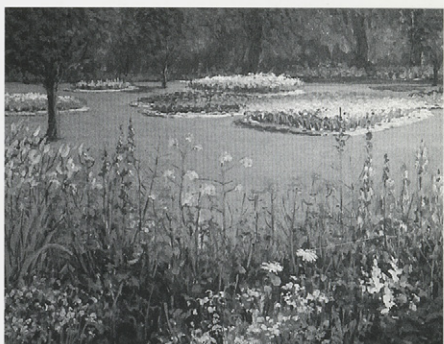
134

Palmer; Franklin
Pool & Rocks
oil on canvas



104

Litzgus; Hazel
Kananaskis Valley
watercolour on paper



142

Phelps; Stan
Full Bloom - Riley Park
acrylic on canvas



108

Martin; Thomas Mower
Fallen Trees
watercolour on paper



144

Phillips; Walter J.
Mountain Road
coloured woodblock on paper

LEVIS

FINE ART AUCTIONS & APPRAISALS

A DIVISION OF ARTBANK INC.

FINE ART AUCTION

PREVIEW

SATURDAY, APRIL 24TH, 10 A.M. TO 5 P.M.

SUNDAY, APRIL 25TH, 10 A.M. TO 5 P.M.

MONDAY, APRIL 26TH, 10 A.M. TO 2 P.M.

AUCTION

MONDAY, APRIL 26, 1993 AT 7:00 P.M.

PREVIEW AND AUCTION AT:



FORT CALGARY HISTORICAL PARK
750 - 9 AVENUE S.E.
CALGARY, ALBERTA

FOR MORE INFORMATION CONTACT:

DOUG LEVIS
LEVIS FINE ART AUCTIONS & APPRAISALS
#128, 1711 - 10 AVENUE S.W.
CALGARY, ALBERTA T3C 0K1
TEL: (403) 541-9099 FAX: (403) 547-9097
G.S.T. R121 033 252

CATALOGUE \$15.00 (G.S.T. INCLUDED) • \$17.00 BY MAIL (G.S.T. INCLUDED)
A VIDEO OF THE COMPLETE SELECTION OF ARTWORK: \$30.00 (G.S.T. INCLUDED)

STANDARD CONDITIONS OF SALE

1. LEVIS Fine Art Auctions & Appraisals, or LEVIS or "we" refer, for all purposes relating to this auction, to the corporation LEVIS Fine Art Auctions & Appraisals, a Division of Artbank Incorporated.
2. A Buyer's Premium of 10% of the Hammer Price shall be added thereto and is payable by the Purchaser as part of the total purchase price.
3. Goods and Services Tax of 7% will be charged on the Hammer Price and Buyer's Premium on all lots.
4. Although LEVIS Fine Art Auctions & Appraisals take care and diligence in their catalogue of the lots offered for auction, all Property is sold "as is" and neither we nor our agents, auctioneers or other personnel nor the Consignor make any warranties or representations as to the correctness of the catalogue or other descriptions contained therein, of the physical condition, size, authenticity, or quality. Prospective bidders should inspect the property before bidding to determine its condition, size and whether the purchaser acquires any reproduction rights in the property.
5. Notwithstanding the preceding condition, if within twenty-one days of the sale of any lot, the Purchaser can provide us the written opinion of two acknowledged experts that the art, as outlined in the glossary, is in effect mis-described in substantial particular in the catalogue and within fourteen days after such notice the Purchaser returns the lot to us in the same condition as when sold, we as agent for the Consignor will rescind the sale and refund the Purchase Price received by them.
6. We reserve the right to withdraw any property before the moment of sale.
7. Unless otherwise announced by the auctioneer, all bids are per lot as numbered in the catalogue.
8. We reserve the right to reject any bid. The highest bidder acknowledged by the auctioneer will be the purchaser. In the event of a dispute between bidders, or in the event of doubt on the part of us as to the validity of any bid, the auctioneer will have the final discretion either to determine the successful bidder or to reoffer and resell the article in dispute. If any dispute arises after the sale, our sale record is conclusive.
9. If the auctioneer decides without regard to the printed estimated price that any opening bid is below the value of the lot offered, he may reject the bid and withdraw the lot from the sale, and if, having acknowledged an opening bid, he decides that any advance thereafter is insufficient, he may reject the advance.
10. On the fall of the auctioneer's hammer or indication of being sold, title to the offered lot will pass to the highest bidder acknowledged by the auctioneer, subject to conditions set forth herein, and such bidder thereupon
 - (a) assumes full risk and responsibility therefor,
 - (b) will sign a confirmation of the purchase thereof, and
 - (c) will thereupon pay the full purchase price therefor or such part as we may require. All property must be removed from our premises by the purchaser at their expense not later than one business day following its sale and if is not so removed, a handling charge of 5% of the purchase price per month until removal of the property will be payable by the purchaser.
11. Payment in full must be made on the day of the sale by cash, certified cheque, travellers cheque, Visa, MasterCard or bank draft, unless other arrangements have been made with the auction house prior to the sale.

GUIDE FOR PROSPECTIVE BUYERS

A premium of 10% will be added to the hammer price of all Property sold. This premium is payable by all purchasers.

GOODS AND SERVICES TAX

G.S.T. of 7% will be charged on the Hammer Price and on the Buyer's Premium.

RESERVES

A reserve is the confidential minimum price agreed between the seller and the auction house, below which the art work will not ordinarily be sold. We do not accept reserve prices that would exceed the printed estimate. As agents for the consignor, we may place bids during the auction if the current bid is below the reserve on the lot being offered.

ESTIMATES

As a service to our clients, we provide an estimate which in our opinion the lot offered may sell for based upon previous auctions results by the artist or something similar. These are only estimates and are not appraised values. In addition, estimates are worked on well in advance of the publication of the catalogue. Please contact the office on any particular lot. In the case of a lot with a reserve price, we do not allow the reserve to exceed the printed estimate.

INFORMATION FOR CONSIGNORS

We are always looking for good art work to sell at auction. If you have something you think we may be interested in, please give us a call at our offices for a free confidential appointment.

Standard commission rates are as follows:

10% for lots selling for \$1,000 or more

15% for lots selling for under \$1,000

If there is a reserve price and the lot fails to sell, there is a reserve bid fee of 5% of the reserve price (minimum charge of \$50)

While the consignor is responsible for the reserve fee and shipping to and from the auction, the auction company is responsible for the following:

- advertising
- cataloguing and/or photography expenses
- insurance

REGISTRATION

You should arrive before the auction to register for the auction. You will receive a card to fill out with a number on it, your bidding number. Please ensure that you have established credit references before the auction.

BIDDING

If you are successful on a particular lot, you will be requested to show your bidder number

ABSENTEE BIDS

If you are unable to attend the auction, you may use the enclosed Absentee Bid form at the end of the auction catalogue. We will act on your behalf to try and purchase the lot(s) of your choice for the lowest possible price possible up to the top amount you indicate.

PAYMENT

Payment may be made by cash, certified cheque, MasterCard, Visa, or bank draft. Payment must be made in full the day of the auction.

REMOVAL OF PROPERTY

Once payment has been made in full, you may pick up your art work. Art work left with the auction company are left at the purchasers risk and peril.

INFORMATION ON APPRAISALS

Written appraisals can be prepared for insurance, probate, family division or other purposes. Appraisal fees vary according to circumstance so please contact the office regarding particulars. A partial rebate of our fee will be made on appraised property subsequently accepted by us for sale.

CATALOGUE SUBSCRIPTIONS

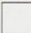
Catalogue subscriptions receive the highest priority and automatically receive auction results after the auction. Subscription rates are available for one or two year periods. Please contact the office for more information.

GLOSSARY

The following terms are used in the catalogue and description of the artists and lots:

- Walter Joseph Phillips** – artist
A.S.A., C.S.P.W.C., R.C.A. – associations
– see below
[1884-1963] – date of birth and death of artist
Canadian – nationality
see – references for particular artist

While this is the highest category of authenticity and is in our opinion, a work by the artist, it is made without qualifications as to authorship.

 – illustrated black and white

 – illustrated colour

[b.1952] – date of birth of artist

ca. – circa

fl. – flourished in and around this time period

signed/dated/titled – in our opinion, the work has been signed / dated / titled by the artist unless otherwise noted

signed in plate / block – in our opinion the art work was signed / dated / titled by the artist in the plate before printing

bears signature / date / title – in our opinion the signature / date / title is by a hand other than the artist

verso – on the reverse side

archival mat – front mat is of archival material

archival material throughout – work has been examined out of the frame and in our opinion all framing is of archival material

Denglas – glazed with Denglas material

unframed – all work is framed unless noted as unframed

size – size is always height by width (by depth for sculpture) in inches rounded down to the nearest quarter of an inch and to the nearest whole centimetre

Ref – reference

Prov – provenance – indicates previous owners either by way of labels and / or other information. This is not necessarily an indication of present ownership.

LOT OF ?? – more than one item in lot

ESTIMATE – an estimate of what the art work may sell for but it is only intended as an estimate

The following abbreviations are used for professional associations, societies, galleries, schools and foundations:

- A.A.F. – Alberta Art Foundation
A.C.A. – Alberta College of Art
A.G.O. – Art Gallery of Ontario
A.R.C.A. – Associate Royal Canadian Academy of Arts (1880)
A.R.E. – Associate Royal Society of Painter-Etchers and Engravers
A.S.A. – Alberta Society of Artists (1931)
B.C.S.A. – British Columbia Society of Artists
C.G.P. – Canadian Group of Painters (1933-1969)
C.P.E. – Society of Canadian Painter-Etchers and Engravers (1916-1976)
C.S.G.A. – Canadian Society of Graphic Art (1923-1976)
C.S.P.W.C. – Canadian Society of Painters in Water Colours (1925)
E.A.G. – Edmonton Art Gallery
F.C.A. – Federation of Canadian Painters (1941)
M.S.A. – Manitoba Society of Artists
N.G.C. – National Gallery of Canada
O.S.A. – Ontario Society of Artists (1872)
P.S.C. – Pastel Society of Canada
R.A. – Royal Academy (1768)
R.B.A. – Royal Society of British Artists
R.C.A. – Royal Canadian Academy of Arts (1880)
R.E. – Royal Society of Painter-Etchers and Engravers
R.S.A. – Royal Scottish Academy
R.M.S. – Royal Miniature Society
S.W.E. – Society of Wood Engravers (1919)

**MONDAY, APRIL 26TH AT 7:00 P.M.
LOT #1 THROUGH LOT #228**

PLEASE NOTE:

BUYER'S PREMIUM: A Premium of 10% will be added to the Hammer Price of all property sold. The Premium is payable by all purchasers.

GOODS AND SERVICES TAX: G.S.T. of 7% will be charged on the total of the Hammer Price and on the Buyer's Premium.

Additional notes may be found at the front of the catalogue for prospective buyers.

BOORNE & MAY

[20th century] CANADIAN

William Hanson Boorne [ca.1860-1940] and Ernest G. May

1

UNTITLED -
THE ALEXANDER BLOCK, CALGARY
black and white photograph
9.25 x 7.75 in. / 23 x 20 cm.
mounted on card stock with company name Boorne & May Photographers, Calgary, N.W.T.; archival mat front and back
Ref: in 1900 the lawyer P.J. Nolan occupied the upper offices and the Calgary Herald occupied one of the main floor offices which was subsequently taken over by the Bank of North America in 1905.
Prov: Joyce Williams Antique Prints, Vancouver, label verso
ESTIMATE: 150/200

2

DEVIL'S GAP, BEAVER CANYON,
SELKIRKS #614
black and white photograph
6.5 x 9.25 in. / 17 x 23 cm.
embossed name Boorne & May, Calgary, lower right below mat; archival material throughout
ESTIMATE: 150/200

GEORGE NOBLE

[1879-1965] CANADIAN

3

TRAPPER'S SHACK
hand-coloured black and white photograph
9.25 x 7.25 in. / 23 x 18 cm.
signed and titled along bottom of mat; mounted on paper board; archival mat
Prov: private collection, Alberta
ESTIMATE: 150/250

4

BOW VALLEY
hand-coloured black and white photograph
8 x 10 in. / 20 x 25 cm.
signed and titled along bottom of mat; archival mat; bears inscription attached to back with date 1952
Prov: private collection, Alberta
ESTIMATE: 150/250

5

MT. CASCADE
hand-coloured black and white photograph
5 x 7 in. / 13 x 18 cm.
signed and titled along bottom of mat; archival mat
Prov: Noble's Camera Shop, Banff, label verso; private collection, Alberta
ESTIMATE: 150/250

W. AIKMAN

[fl.1897] BRITISH

6

THE DIAMOND JUBILEE THANKSGIVING SERVICE AT ST. PAUL'S CATHEDRAL
etching on paper
23.75 x 31.25 in. / 60 x 79 cm. Dated: 1897
signed in plate lower right; printed title and inscription along bottom; paper size: 27.5 x 33.75 in.; light vertical acid stains; laid down on paper board; archival mat
Ref: etched by G.Aikman, A.R.S.A.; published by J.Watt, Edinburgh
ESTIMATE: 250/350

W.H. ALLEN

[fl.1882] BRITISH

7

UNTITLED - ENGLISH PASTORAL SCENE
watercolour on paper
8 x 16 in. / 20 x 41 cm. Dated: 1882
signed and dated lower left; laid down on paperboard around edges; two very small scrapes; archival mat
Prov: private collection, Alberta
ESTIMATE: 400/600

WILLIAM ARMSTRONG

A.R.C.A.

[1822-1914] CANADIAN

see *Early Days on the Great Lakes: the Art of William Armstrong*, by H.Campbell, McClelland & Stewart, 1971; *Catalogue of the N.G.C., Ottawa - Canadian Art - Vol. 1 / A-F*, by C.Hill, pg.20 and *Early Painters and Engravers in Canada*, by R.Harper, pg.10

8

UNTITLED - PINE TREE IN A ROCK CLEFT - LAKE SUPERIOR
watercolour on paper
6.25 x 4.25 in. / 16 x 11 cm. Dated: 1906
signed with initials and dated lower left; archival material throughout; Denglas
Prov: Emmett's Framing, Toronto, label verso
ESTIMATE: 1,500/2,500

GEORGE BALBAR

C.S.P.W.C.

[fl.1973] CANADIAN

9

UNTITLED - CHAIR AND BLOUSE
watercolour on illustration board
13.75 x 18 in. / 35 x 46 cm.
signed lower left; paper size: 18 x 23.75 in.
ESTIMATE: 200/300

JOHN BANTING

[1902-1972] BRITISH

see *Avant-Garde British Printmaking 1914-1960*, by F.Carey, pg.107, British Museum Publications, 1990 for extensive biography and other examples in the Tate Gallery, London

- 1** UNTITLED - ABSTRACT #36/45
coloured linoblock on paper
3.25 x 4.75 in. / 8 x 12 cm. Dated: 1931
signed, dated and numbered along bottom;
embossed chop lower left below mat; paper
size: 8.75 x 10.5 in.; archival material
throughout
Prov: private collection, Vancouver
ESTIMATE: 300/400

MAXWELL BENNETT BATES

A.S.A., C.G.P., C.S.P.W.C., R.C.A.

[1906-1980] CANADIAN

see *Maxwell Bates, A Retrospective*, by I.Thom, Art Gallery of Greater Victoria;
Maxwell Bates: Landscapes 1948-1978, by N.Townshend, Medicine Hat Art Gallery and
Catalogue of the N.G.C., Canadian Art, Vol. 1, A-F, ed.C.Hill, pg.62 for works in the National Gallery. The definitive Maxwell Bates book written by Kay Snow and published by the University of Calgary Press is expected out by this summer. Please contact your local book store or our office for more details.

- 1** EDGE OF TOWN #14/14
lithograph on paper
6.75 x 14.25 in. / 17 x 36 cm. Dated: 1956
signed, dated, titled and numbered along
bottom; registration holes under mat; paper
size: 10 x 16 in.; archival mat
Prov: estate of Charlotte Bates, Victoria
ESTIMATE: 300/500

FRANK LYMAN BEEBE

[b.1914] CANADIAN

worked as the Vancouver Zoo curator from 1939 and later as illustrator and naturalist with the Provincial Museum in Victoria; his work was used in many international and national periodicals

- 2** SILVER GYR
gouache on masonite
12.75 x 16.25 in. / 32 x 41 cm.
signed lower right; titled below mat; biography attached verso
Prov: private collection, B.C.
ESTIMATE: 400/500

LEON BELLEFLEUR

C.G.P., C.S.G.A.

[b.1910] CANADIAN

see *Leon Bellefleur*, by the N.G.C., 1968 as well as *Catalogue of the N.G.C., Ottawa - Canadian Art - Vol. 1 / A-F*, by C.Hill, pg.75 for works in the N.G.C.; member of the Contemporary Arts Society, Montreal

- 3** ROSES - FUSEES #9/15
lithograph on paper
11.75 x 9.25 in. / 30 x 23 cm. Dated: 1958
signed, dated, titled and numbered along
bottom; paper size: 15 x 11 in.; tape stains
in corner; archival material throughout
Ref: Bellefleur studied printmaking in Paris
in 1954 and again in 1958-59 on a Canada
Council fellowship
ESTIMATE: 400/500

- 4** ROCAMBOLESQUE #2/15

lithograph on paper
7 x 5.25 in. / 18 x 13 cm. Dated: 1959
signed, dated, titled and numbered along
bottom; paper size: 11 x 7.5 in.; tape stain
upper and lower margin; unframed
ESTIMATE: 400/500

ANDRE BIELER

C.S.P.W.C., O.S.A., R.C.A.

[b.1896] CANADIAN

see *Andre Bieler, An Artist's Life and Times*, by F.Smith, Merritt Publishing, 1980;
and *Images of the Land, Canadian Block Prints 1919-1945*, by P.Ainslie and *Catalogue of the N.G.C., Canadian Art, Vol. 1, A-F*, ed.C.Hill, pg.92, N.G.C., 1988

- 5** SKEENA FISHERMAN #32/50
silkscreen on paper
36.25 x 23.25 in. / 92 x 59 cm. Dated: 1982
signed, dated, titled and numbered along
bottom; paper size: 42.75 x 30 in.; archival
mat front and back
Prov: certificate of authenticity, Merritt Publishing and West End Gallery, Edmonton, labels verso
ESTIMATE: 350/550

SAMUEL BLACK

C.S.P.W.C., R.C.A.

[b.1913] CANADIAN

see *Printmaking in British Columbia 1889-1983*, by N.Tuele, for another example of this artist's work; see *Dictionary of Canadian Artists - Vol. 1*, by C.MacDonald, pg.50 for biography

- 6** SILENT OBSERVER #26/50
lithograph on paper
22 x 17.5 in. / 56 x 44 cm.
signed, titled and numbered along bottom
ESTIMATE: 200/300

DAVID LLOYD BLACKWOOD

C.P.E., C.S.P.W.C., O.S.A., R.C.A.

[b.1941] CANADIAN

see *David Blackwood Prints 1962-1984*, by P.Grattan, Art Gallery, Memorial University of Newfoundland and *The Art of David Blackwood*, by W.Gough, McGraw Hill Ryerson, 1988 and *Catalogue of the N.G.C., Canadian Art, Vol. 1, A-F*, ed.C.Hill, pg.96

17

PASSING SHADOW #A.P. 13/15
coloured etching on paper
31.75 x 19.75 in. / 81 x 50 cm. Dated: 1990
signed, dated, titled and numbered along
bottom; inscribed ed:75; paper size: 36.25
x 24.25 in.; archival material throughout
Prov: private collection, Edmonton
ESTIMATE: 2,000/3,000

18

EDWARD AND MOLLY #75/75
coloured etching on paper
20 x 31.75 in. / 51 x 81 cm. Dated: 1989
signed, dated, titled and numbered along
bottom; paper size: 24.25 x 36.5 in.;
archival mat front and back
Prov: Heffel Gallery, Vancouver, label verso
ESTIMATE: 1,500/1,750

19

SPRING #24/25
etching on paper
19.75 x 22.75 in. / 50 x 58 cm. Dated: 1966
signed, dated, titled and numbered along
bottom; paper size: 24.5 x 27.5 in.; archival
mat front and back
ESTIMATE: 1,000/1,500

20

INSCRIPTION AT THE BELVEDERE #A.P.
coloured etching on paper
15.75 x 19.75 in. / 40 x 50 cm. Dated: 1971
signed, dated, titled and numbered along
bottom; paper size: 18 x 23 in.; archival mat
front and back
Prov: Woltjen/Udell Gallery, Edmonton, label
verso
ESTIMATE: 700/900

RONALD BLOORE

F.C.A.

[b.1925] CANADIAN

see *A.G.O. - the Canadian Collection*, by the
A.G.O., pg.33, as well as *Catalogue of the
N.G.C., Ottawa - Canadian Art - Vol. 1 / A-F*,
by C.Hill, pg.98 and *Visions: Contemporary
Art in Canada*, by R.Bringhurst, pg.98

21

UNTITLED -
WHITE VERTICAL STRIPES ON WHITE
oil on masonite
5 x 7 in. / 13 x 18 cm.
label on back inscribed 'T.Q.D.W. - R.M.C.'
Ref: see *Selected View: Longstaffe Collec-
tion*, by L.Farrell-Ward, pg.39 for similar
painting dated 1969 now in the collection of
the Vancouver Art Gallery
Prov: ex-collection, Mrs. McAnley, Toronto
ESTIMATE: 800/1,200

ALAN BRUCE BRADSHAW

[b.1945] CANADIAN

see *The White Line*, by G.Brender a Bran-
dis, pg.72, *Porcupine's Quill*, 1990 for bio-
graphy and other examples

22

LE MIRROR #1/30
wood engraving on paper
10.5 x 10.25 in. / 27 x 26 cm. Dated: 1979
signed with initials and dated in block lower
right; signed and numbered along bottom;
paper size: 14.25 x 13.5 in.; archival materi-
al throughout
ESTIMATE: 250/350

HENDRIK BRES

A.S.A.

[b.1932] CANADIAN

see *Hendrik Bres*, by the E.A.G., 1977 and
Spaces and Places, by J.Ironside, pg.72 for
biography and another example of the
artist's work in the collection of the A.A.F.

23

UNTITLED - FOOTHILL LANDSCAPE
oil on masonite
10 x 12 in. / 25 x 30 cm. Dated: 1980
signed and dated lower left
Prov: private collection, Edmonton
ESTIMATE: 200/300

ERROL BRIMACOMBE

[b.1947] CANADIAN

artist lives in British Columbia

24

EVENING GLORY
watercolour on watercolour board
14.5 x 21 in. / 37 x 53 cm.
signed lower left
ESTIMATE: 300/400

25

COLD FRONT
watercolour on watercolour board
10.5 x 14.5 in. / 27 x 37 cm.
signed lower right; titled on label verso
ESTIMATE: 200/300

JOHN BYRNE

[1906-1976] CANADIAN

26

KICKING HORSE RIVER AT YOHO -
MT. CATHEDRAL
oil on canvas board
12.75 x 29.75 in. / 32 x 76 cm.
signed lower right; titled on label verso
Prov: Mid-West Frame, Calgary, label verso;
private collection, B.C.
ESTIMATE: 400/600

JOHN HERBERT CADDY

[1801-1883] CANADIAN

see *W.H. Coverdale Collection of Canadiana*, by W.Cooke, pg.35 and *Early Painters and Engravers in Canada*, by R.Harper, pg.54 for biography

27

WHIRLPOOLS, NIAGARA RIVER

watercolour on paper

12.5 x 18.25 in. / 32 x 46 cm.

archival mat front and back

Prov: purchased at McCready Galleries, Toronto, ca. 1970

ESTIMATE: 1,200/1,800

28

UNTITLED -

LAKE VIEW WITH LIGHTHOUSE,
THOUSAND ISLANDS, NEAR KINGSTON,
ONTARIO

watercolour on paper

7 x 12.75 in. / 18 x 32 cm.

small tape stains verso and minor repair
upper left corner; archival mat front and back

Prov: private collection, Kingston, Ontario

ESTIMATE: 1,000/1,500

FREDERICK SPROSTON CHALLENGER

C.S.P.W.C., O.S.A., R.C.A.

[1869-1959] CANADIAN

see *Royal Canadian Academy of Arts 1880-1979*, by E.McMann, pg.70, for exhibition list and A.G.O. - *the Canadian Collection*, by the A.G.O., pg.70, and *Catalogue of the N.G.C., Ottawa - Canadian Art - Vol. 1 / A-F*, by C.Hill, pg.182

29

THE OLD PIONEER

oil on canvas mounted on panel

9.75 x 7 in. / 25 x 18 cm. Dated: 1908

signed upper right; titled on label verso

Ref: exhibition label Ontario Society of Artist, 1908 verso; the painting was also listed as being exhibited at the Montreal Museum of Fine Arts in 1908 catalogue #38A, price \$35; the artist was living in Conestogo, Ontario at this time

Prov: MacKenzie & Co., Toronto, label verso

ESTIMATE: 800/1,200

THOMAS F. CHATFIELD

[b.1921] CANADIAN

30

THOMPSON RIVER, B.C.

acrylic on paper

21.25 x 29 in. / 54 x 74 cm.

signed lower right; titled verso

ESTIMATE: 300/500

GERDA CHRISTOFFERSON

[fl.1968] CANADIAN

31

SELF PORTRAIT -**PRINCESS O-HAZEL-TOE, STONEY**

oil on canvas board

20 x 24 in. / 51 x 61 cm. Dated: 1945

signed lower right; titled, dated and inscribed
verso; small nail hole extreme top margin

Prov: private collection, Calgary

ESTIMATE: 200/400

S. PAUL CLOUTIER

[b.1919] CANADIAN

see *The Saskatchewan Arts Board Collection*, by N.Dillow, pg.20, Norman MacKenzie Art Gallery, 1978 for biography

32

UNTITLED - ABANDONED BARN

watercolour on illustration board

12.5 x 10 in. / 32 x 25 cm. Dated: 1968

signed and dated lower right

Prov: LaFlamme Galleries, Calgary stamp
verso; private collection, Calgary

ESTIMATE: 200/300

STANLEY MOREL COSGROVE

A.R.C.A., C.G.P.

[b.1911] CANADIAN

see *Catalogue of the N.G.C., Ottawa - Canadian Art - Vol. 1 / A-F*, by C.Hill, pg.213 for examples in the collection as well as *Dictionary of Canadian Artists - Vol.1*, by C.MacDonald, pg.145 for biography

33

UNTITLED - NUDE

conte on paper

12.25 x 9.5 in. / 31 x 24 cm. Dated: 1976

signed and dated lower right

Prov: Woltjen/Udell Gallery, Edmonton, label
verso

ESTIMATE: 750/1,000

JACK L. COWIN

[b.1947] CANADIAN

see *Country Pleasures, The Angling Art of Jack Cowin*, by A.oko, Fifth House, 1984 and *Catalogue of the N.G.C., Canadian Art, Vol. 1, A-F*, ed.C.Hill, pg.222

34

UNTITLED - CUTTHROAT TROUT

pastel on paper

7 x 25.25 in. / 18 x 64 cm. Dated: 1986

signed and dated lower right; paper size:
22.5 x 30 in.; archival material throughout

Prov: Susan Whitney Gallery, Regina stamp
verso; private collection, Calgary

ESTIMATE: 800/1,000

3
5

COLOUR TROUT SERIES #
PRINTERS PROOF
lithograph on paper
18 x 21.5 in. / 46 x 55 cm. Dated: 1982
signed, titled and dated along bottom;
paper size: 22.25 x 29.75 in.; archival mat
Ref: unique print for printer with registration
marks; printed on white Somerset rag paper,
stronger colours than regular edition; illustrated
Country Pleasures, by A.Oko, pg.27
Prov: purchased from the artist; private col-
lection, Calgary
ESTIMATE: 400/600

3
6

UNTITLED - STUDY WITH HAND
pencil on mylar
12.75 x 17.75 in. / 32 x 45 cm.
signed lower right; paper size: 16 x 22.25
in.; archival mat front and back
Ref: the artist spent a year at the Indiana
School of Medicine working on medical
illustration and design
Prov: private collection, Calgary
ESTIMATE: 400/600

3
7

UNTITLED - MUDDLER MINNOW
pencil and watercolour on paper
2.75 x 4.5 in. / 7 x 11 cm.
unsigned; paper size: 6.75 x 7.25 in.;
archival mat front and back
Prov: purchased from the artist; private col-
lection, Calgary
ESTIMATE: 200/400

MICHAEL COWLES
[20th century] CANADIAN

3
8

STARLING
pencil on paper
20 x 23 in. / 51 x 58 cm.
signed lower left; archival mat
Prov: private collection, Calgary
ESTIMATE: 200/300

WILLIAM NICHOL CRESSWELL
O.S.A., R.C.A.
[1822-1888] CANADIAN
see *Catalogue of the N.G.C., Ottawa -
Canadian Art - Vol. 1 / A-F*, by C.Hill,
pg.229 as well as A.G.O. - *the Canadian
Collection*, by the A.G.O., pg.89 and *Early
Painters and Engravers in Canada*, by
R.Harper, pg.78 for biography

3
9

UNTITLED - STORMY SEAS
watercolour on paper
10.5 x 15.75 in. / 27 x 40 cm.
signed with monogram lower right; laid
down on mat board
Ref: see *Catalogue of the N.G.C., Canadian
Art, Vol. 1, A-F*, by C.Hill entry #23378 for an
almost identical view - dated 1872
Prov: O.B. Graves, Art Dealer, London,
Ont., label verso
ESTIMATE: 1,500/2,000

DUNCAN MACKINNON CROCKFORD
[1920-1991] CANADIAN

4
0

THE BANFF VALLEY, ALBERTA
oil on canvas
16 x 20 in. / 41 x 51 cm. Dated: 1971
signed and dated lower right; titled on
stretcher verso
Prov: purchased directly from the artist's
private collection; private collection, Calgary
ESTIMATE: 1,500/2,000

EARL CUMMINS
[fl.1979] CANADIAN

4
1

BIRCH #2
watercolour on paper
15 x 11 in. / 38 x 28 cm.
signed lower right; titled verso
Prov: West End Gallery, Edmonton label
verso; private collection, Edmonton
ESTIMATE: 250/350

ARDATH DAVIS
[fl.1977] CANADIAN

4
2

EDGE OF THE RAVINE - RIVER ICE
watercolour on paper
14.5 x 21.25 in. / 37 x 54 cm.
signed lower left; titled on mat and label verso
Prov: West End Gallery, Edmonton, label
verso; private collection, Edmonton
ESTIMATE: 300/400

RICHARD DAVIS
[b.1947] CANADIAN

4
3

NEW CERAMICS
pencil on paper
12.5 x 15.75 in. / 32 x 40 cm. Dated: 1986
signed and dated lower right
Prov: Wunderlich & Company, New York,
label verso
ESTIMATE: 500/700

WILLIAM [BILL] DUMA
A.S.A.
[b.1936] CANADIAN
see *Founders of the A.C.A.* by L.Greenfield,
pg.79 for biography and another example of
the artist's work

4
4

SUMMER REFLECTIONS
oil on canvas board
12 x 16 in. / 30 x 41 cm. Dated: 1982
signed lower left; signed, dated and titled verso
ESTIMATE: 400/500

4
5

TREES AND FIREWEED
oil on masonite
9 x 12 in. / 23 x 30 cm.
signed lower right; signed and titled verso
Prov: private collection, Alberta
ESTIMATE: 300/400

FRIEDEL DZUBAS

[b.1915] AMERICAN

Friedel Dzubas was the workshop leader at the Emma Lake workshop in 1979; see *Flat Side of Landscape*, by J.O'Brian, pg.117 for another example of the artist's work

4
6

UNTITLED #14/120

lithograph on paper
31 x 22.5 in. / 79 x 57 cm. Dated: 1978
signed, dated and numbered along bottom;
Styria Studio embossed chop lower left
margin; paper size: 35 x 27 in.; archival mat
front and back

ESTIMATE: 500/700

DOUGLAS ELLIOTT

[b.1916] CANADIAN

4
7

UNTITLED - WOODED LANDSCAPE

oil on board
10 x 15.75 in. / 25 x 40 cm.
signed lower right
Prov: Canadiana Galleries, Calgary, label
verso; private collection, Calgary

ESTIMATE: 200/300

MAUREEN ENNS

A.S.A.

[b.1949] CANADIAN

see *Beauty Pageant - Paintings by Maureen Enns*, by E.Brown, Peter Whyte Museum, 1984; *Maureen Enns: Back of Beyond*, by D.McAlear, Nickle Arts Museum, 1988 as well as *Alberta Art, Works from the A.A.F.*, by L.Schmidt, for biography

4
8

FREE FALL #2/100

coloured woodblock on paper
11 x 13.25 in. / 28 x 34 cm.
signed, titled, and numbered along bottom;
paper size: 15.25 x 17.5 in.; archival mat
front and back
Prov: private collection, Calgary

ESTIMATE: 150/250

JOHN KENNETH ESLER

A.S.A., C.S.G.A., C.P.E., M.S.A., R.C.A.

[b.1933] CANADIAN

see *Founders of the A.C.A.*, by V.Greenfield, pg.80 and *Printmaking in Alberta 1945-1985*, by B.Cochran, pg.66 as well as *Catalogue of the N.G.C., Canadian Art, Vol. 1, A-F*, ed.C.Hill, pg.300; the Nickle Arts Museum's retrospective show of the artist's work is planned for the fall of 1994

4
9

SUMMER HOUSE III #41/75

etching on paper
17.75 x 11.5 in. / 45 x 29 cm. Dated: 1979
signed, dated, titled and numbered along
bottom; paper size: 30 x 22 in.
Prov: West End Gallery, Edmonton, label
verso

ESTIMATE: 150/250

5
0

NIGHT LETTER #7/50

etching on paper
17.75 x 23.5 in. / 45 x 60 cm. Dated: 1979
signed, dated, titled and numbered along
bottom; paper size: 22.25 x 30 in.; archival
mat front and back
Prov: West End Gallery, Edmonton label
verso; private collection, Edmonton

ESTIMATE: 150/250

5
1

CONQUERED MOUNTAIN II #38/50

etching on paper
12 x 17.75 in. / 30 x 45 cm. Dated: 1979
signed, dated, titled and numbered along
bottom; paper size: 22.25 x 29.75 in.
Prov: private collection, Edmonton

ESTIMATE: 150/250

5
2

CLOSE-UP #68/75

etching on paper
23.75 x 17.5 in. / 60 x 44 cm. Dated: 1982
signed, dated, titled and numbered along
bottom; paper size: 30 x 22.25 in.; archival
mat front and back
Prov: E.A.G., Art Rental and West End
Gallery, Edmonton, labels verso

ESTIMATE: 150/250

MEREDITH EVANS

[b.1919] CANADIAN

5
3

HEAVY SNOWFALL, STONEY PLAIN

oil on canvas
12 x 16 in. / 30 x 41 cm. Dated: 1980
signed and dated lower left; signed, dated
and titled verso

ESTIMATE: 300/500

JOSEPH FAFARD

[b.1942] CANADIAN

see *Saskatchewan: Art and Artists*, by Norman MacKenzie Art Gallery, pg.29 for biography and *Visions, Contemporary Art in Canada*, ed.R.Keziere, pg.128 and *Catalogue of the N.G.C., Canadian Art, Vol. 1, A-F*, ed.C.Hill, pg.304

5
4

RAM #29/45 E.V.

hand-coloured lithograph on paper
10.25 x 12.75 in. / 26 x 32 cm. Dated: 1989
signed, dated, titled and numbered along
bottom; paper size: 14.75 x 16.75 in.;
archival mat front and back
Prov: private collection, Saskatchewan

ESTIMATE: 350/450

TERRY FENTON

[b.1940] CANADIAN
current director Mendel Art Gallery, Saskatoon; past director E.A.G. and the Leighton Foundation, Calgary

1991

DOWN THE SHUTE
oil on masonite
9.75 x 20 in. / 25 x 51 cm. Dated: 1986
signed and dated lower right; signed, dated, and titled verso
Ref: Siffleur River is in the interior of B.C. and flows into the Thompson River
Prov: ex-collection Mr. & Mrs. Fenton, Calgary/Saskatoon
ESTIMATE: 300/500

BRIAN RICHARD FISHER

R.C.A.
[b.1939] CANADIAN
see *Catalogue of the N.G.C., Ottawa - Canadian Art - Vol. 1 / A-F*, by C.Hill, pg.327 as well as *Vancouver Art and Artists 1931-1983*, by L.Rombout, pg.407 for biography

56

STEPPE III NO.3
ink on illustration board
15 x 30 in. / 38 x 76 cm. Dated: 1969
signed, dated, and titled verso
Ref: the N.G.C. collection contains a Fisher painting titled *Steppe II, No.3* and dated 1970
Prov: Downstairs Gallery, Edmonton, label verso
ESTIMATE: 200/300

57

ODYSSEY 8 #A.P.
silkscreen on paper
22.5 x 27.25 in. / 57 x 69 cm. Dated: 1969
signed, dated, titled and numbered along bottom; paper size: 23.5 x 28 in.
Prov: Downstairs Gallery, Edmonton, label verso
ESTIMATE: 150/250

LIONEL LEMOINE FITZGERALD

C.G.P., M.S.A.
[1890-1956] CANADIAN
see *Lionel LeMoine FitzGerald - the Development of an Artist*, by P.Bovey and A.Davis, Winnipeg Art Gallery, 1978 as well as *Catalogue of the N.G.C., Ottawa - Canadian Art - Vol. 1 / A-F*, by C.Hill, pg.328 for the N.G.C.'s collection of the artist's work

58

UNTITLED -
PRAIRIE LANDSCAPE WITH CLOUDS
pencil on paper
11.5 x 14.5 in. / 29 x 37 cm.
signed with initials lower right; small hole upper centre under mat; tape stains around edges
Ref: Ann Davis, director of the Nickle Arts Museum suggests the drawing dates from the late 1930's or early 40's
Prov: private collection, Edmonton
ESTIMATE: 900/1,200

HARRIET MARY FORD

A.R.C.A., O.S.A.
[1859-1939] CANADIAN
see A.G.O. - *the Canadian Collection*, by the A.G.O., pg.114, as well as *Catalogue of the N.G.C., Ottawa - Canadian Art - Vol. 1 / A-F*, by C.Hill, pg.374 and *Early Painters and Engravers in Canada*, by R.Harper, pg.115 for biography

59

UNTITLED - SUMMER FLOWERS
watercolour on paper
12 x 7.75 in. / 30 x 20 cm.
archival mat front and back; Denglas
Prov: Laing Galleries, Toronto
ESTIMATE: 200/300

ROBERT KAKAY GEESICK

[fl.1988] CANADIAN

60

A GREAT VISION
mixed media on paper
29 x 21.5 in. / 74 x 55 cm. Dated: 1988
signed and dated lower right; irregular shaped paper; archival mat front and back; inscription with legend on paper attached verso
Prov: private collection, B.C.
ESTIMATE: 700/900

61

WOMEN'S MEDICINE VISION
mixed media on paper
38.75 x 12 in. / 98 x 30 cm. Dated: 1987
signed and dated lower right; irregular shaped paper; laid down on archival mat board; archival mat front and back; inscription with legend on paper attached verso
Prov: private collection, B.C.
ESTIMATE: 500/700

ROBERT GENN

[b.1936] CANADIAN
see *Robert Genn: In Praise of Painting*, by R.Genn, Merritt Publishing, 1981; biography in *Dictionary of Canadian Artists - Vol.2*, by C.MacDonald, addendum

62

LOBSTICK ISLAND GROUP -
GREAT SLAVE LAKE
oil on canvas
10 x 12 in. / 25 x 30 cm. Dated: 1975
signed lower right; signed, dated, and titled verso
ESTIMATE: 400/600

63

CREEK #5/34
silkscreen on paper
12 x 16 in. / 30 x 41 cm.
signed, titled and numbered along bottom; paper size: 17 x 22.5 in.; archival mat front and back
Prov: West End Gallery, Edmonton labels verso; private collection, Edmonton
ESTIMATE: 200/300

SARAH GERSOVITZ

R.C.A.

[b.1920] CANADIAN

Dictionary of Canadian Artists - Vol.2, by C.MacDonald, pg.268 for biography

- 64** CHOCOLATE BOX FOR A CANNIBAL II
#9/25
silkscreen on paper
16 x 24.75 in. / 41 x 63 cm.
signed, titled and numbered along bottom;
paper size: 22.25 x 30 in.
Prov: West End Gallery, Edmonton labels
verso; private collection, Edmonton
ESTIMATE: 150/250

LEONARD GIBBS

[b.1929] CANADIAN

- 65** CATCHING UP #A.P.VIII/X
silkscreen and embossing on paper
8 x 8 in. / 20 x 20 cm.
signed, titled and numbered along bottom;
embossed chops of artist and printer below
in margin; paper size: 13.25 x 13 in.; total
edition: 58
Prov: Cassel Galleries, Fredericton, label
verso; private collection, New Brunswick
ESTIMATE: 200/300

MARTIN GIESEN

[fl.1980] CANADIAN

- 66** BLUE MORNING HOUSE
watercolour on paper
9.75 x 14 in. / 25 x 36 cm.
signed lower right; titled on label verso;
archival mat
Prov: West End Gallery, Edmonton, label
verso
ESTIMATE: 250/350

ROLAND GISSING

A.S.A.

[1895-1967] CANADIAN

see *Roland Gissing, The People's Painter*,
by M.Foran, University of Calgary Press,
1988 for many examples of the artists work

- 67** UNTITLED -
WINTER LANDSCAPE, GHOST RIVER
oil on canvas
20 x 24 in. / 51 x 61 cm.
signed lower right
ESTIMATE: 2,000/2,500

COLIN D. GRAHAM

[b.1915] CANADIAN

see *Art in Victoria 1960/1986*, by N.Tuele,
Art Gallery of Greater Victoria for biography
and another example of the artist's work

- 68** THE BIG CLOUD
watercolour on paper
14 x 21.25 in. / 36 x 54 cm. Dated: 1992
signed and dated lower right; signed, dated
and titled verso; archival material throughout
ESTIMATE: 450/550

ORESTES [RICK] DE GRANDMAISON

[1932-1985] CANADIAN

see *Spaces and Places - Eight Decades of
Landscape Painting in Alberta*, by J.Ironside,
pg.122 and *Dictionary of Canadian Artists -
Vol.2*, by C.MacDonald, pg.306 for biography

- 69** ELEVATORS AT MORNINGSIDE
oil on masonite
18 x 30 in. / 46 x 76 cm.
signed lower left
Prov: private collection, Calgary
ESTIMATE: 1,250/1,500

- 70** EVENING CHINOOK, CALGARY
acrylic on panel
10 x 12 in. / 25 x 30 cm. Dated: 1974
signed lower left; signed, dated and titled verso
Prov: private collection, New Brunswick
ESTIMATE: 400/600

FRANCINE GRAVEL

[b.1944] CANADIAN

see *Alberta Art: Works from the A.A.F.*, by
the A.A.F., for biography and other exam-
ples in the Foundation's collection as well
as *Printmaking in Alberta 1945-1985*,
B.Cochrane, pg.75-76

- 71** LES CHANTRES #11/15
etching on paper
4 x 5 in. / 10 x 13 cm. Dated: 1976
signed, dated, titled and numbered along
bottom; paper size: 11 x 12.25 in.
Prov: private collection, Calgary
ESTIMATE: 150/200

RED GROOMS

[b.1920] AMERICAN

see *1991/92 Printworld Directory of Con-
temporary Prints*, by S.Smith, pg.356 for bi-
ography and listing of artist's prints

- 72** BAZILLE #34/40
etching on paper
6.75 x 4.75 in. / 17 x 12 cm. Dated: 1976
signed, titled, dated, and numbered along
bottom; paper size: 14.75 x 11 in.; archival
material throughout
Prov: private collection, Calgary
ESTIMATE: 700/900

REGINALD LLEWELLYN HARVEY

A.S.A.

[b.1888] CANADIAN

according to *Spaces and Places: Eight Decades of Landscape Painting in Alberta*, by J.Ironside, pg.9, A.A.F., 1986, Reg Harvey then Supervisor of Art for Calgary Public School suggested A.C.Leighton as a replacement to Lars Haukaness at the [now] A.C.A.

7 3 UNTITLED - MOUNTAIN LAKE

pastel on paper

8.75 x 6.5 in. / 22 x 17 cm.

signed lower right; archival material throughout

Prov: private collection, Vancouver

ESTIMATE: 200/400

O. JOHN HAWKINS

[b.1935] CANADIAN

this artist spends half of the year in the interior of British Columbia and the other half year in Ontario

7 4 COOPER I

acrylic on canvas

4 x 6 in. / 10 x 15 cm. Dated: 1991

signed with initials lower left; signed, dated and titled verso

Prov: purchased from the artist

ESTIMATE: 150/200

THOMAS SHERLOCK HODGSON

C.P.E., C.S.P.W.C., R.C.A.

[b.1924] CANADIAN

see *A.G.O. - the Canadian Collection*, by the A.G.O., pg.174, *Toronto Painting 1953-65*, by D.Reid, N.G.C., 1972, and *N.G.C. Catalogue of Paintings and Sculpture - Vol. III*, by R.Hubbard, pg.128 for biography and other examples

7 5 UNTITLED - NUDE STUDY

mixed media on paper

8.75 x 7.75 in. / 22 x 20 cm. Dated: 1980

signed and dated lower left; archival mat front and back

Prov: Lake Galleries, Toronto; private collection, Toronto

ESTIMATE: 550/750

ALEXANDER S. HUSVETI

[b.1927] CANADIAN

see *The White Line*, by G.Brender a Brandis, pg.83, *Porcupine's Quill*, 1990 for biography and other examples

7 6 ICARUS #3/30

wood engraving on paper

8 x 6 in. / 20 x 15 cm. Dated: 1990

signed with initials, dated and titled in block lower right; signed, dated, titled and numbered along bottom; paper size: 12.75 x 10 in.; archival material throughout

ESTIMATE: 200/300

JOHN INNES

B.C.S.A., C.S.P.W.C., O.S.A.

[1863-1941] CANADIAN

see *John Innes, Painter of the Canadian West*, by J.Cowan, Rose Cowan & Latta Ltd. 1945, and *Royal Canadian Academy of the Arts 1880-1979*, by E.McMann, pg.202 for exhibition list and *Early Painters and Engravers in Canada*, by R.Harper, pg.169, for biography

7 7

SUMMER SNOW

oil on canvas

24 x 36 in. / 61 x 91 cm.

signed lower right; titled on label verso; small restoration noted

Prov: label lists artist's Vancouver address; Alex Fraser Gallery, Vancouver, label verso

ESTIMATE: 3,000/5,000

OTTO REINHOLD JACOBI

O.S.A., R.C.A.

[1812-1901] CANADIAN

see *A.G.O. - the Canadian Collection*, by the A.G.O., pg.213, *N.G.C. Catalogue - Vol. III*, by R.Hubbard, pg.146 and *Early Painters and Engravers in Canada*, by R.Harper, pg.171 - the artist was invited to Canada in 1860 to paint a gift for the Prince of Wales

7 8

UNTITLED -

VIEW OF A CABIN NEAR A RIVER

watercolour on paper

12 x 19.25 in. / 30 x 49 cm. Dated: 1867

signed and dated lower right; archival mat front and back

Prov: private collection, Toronto

ESTIMATE: 1,500/2,000

ALEX JANVIER

[b.1935] CANADIAN

see *Founders of the A.C.A.*, by V.Greenfield, pg.86 for biography and another example of the artist's work pg.24 and see *Time for Dialogue*, by J.Cardinal-Schubert, pg.17, Calgary Aboriginal Awareness Society, 1992

7 9

SHORELINE EXISTENCE

acrylic on canvas

24 x 30 in. / 61 x 76 cm. Dated: 1973

signed and dated lower right; titled on stretcher verso; unframed

Ref: see *Visions, Contemporary art in Canada*, by R.Bringhurst, pg.150 for another example of the artist's work in the collection of the Department of Indian and Northern Affairs collection

Prov: private collection, Edmonton

ESTIMATE: 1,000/1,500

MICHAEL JANZEN

[fl.1992] CANADIAN

- 80** OH MOTHER EARTH,
LET US NOT FORGET
watercolour on paper
18 x 24 in. / 46 x 61 cm. Dated: 1992
signed lower right; signed, dated and titled
verso as well as artist's label verso; archival
mat front and back
Ref: exhibited John Ingram Gallery, Toronto
and Kaspar Gallery, Toronto
Prov: purchased from the artist
ESTIMATE: 750/900

JOHN KASYN

C.S.P.W.C.

[b.1926] CANADIAN

- 81** NEAR BARTLETT AVE.
oil on masonite
10 x 8 in. / 25 x 20 cm.
signed lower right; signed and titled verso
Prov: artist's label verso
ESTIMATE: 1,300/1,500

- 82** DUNDAS & HICKORY ST.
watercolour on paper
8 x 6 in. / 20 x 15 cm.
signed lower right; signed and titled verso
Prov: artist's label verso
ESTIMATE: 600/800

ILLINGWORTH HOLEY KERR

A.S.A., R.C.A.

[1905-1988] CANADIAN

see *Harvest of the Spirit*, by M.Callahan,
E.A.G., 1985 and *Paint and Circumstance*,
by I.Kerr, Calgary, 1987 and *Founders of the*
A.C.A., by V.Greenfield, pg.87 for biography

- 83** THE CREEK AT JOHN WARE'S
MILLARVILLE RANCH
oil on canvas board
16 x 20 in. / 41 x 51 cm. Dated: 1980
signed with monogram lower right; signed,
dated and titled verso
ESTIMATE: 2,000/2,500

- 84** NIGHT, ALDERSYDE, ALTA.
oil on canvas board
12 x 16 in. / 30 x 41 cm. Dated: 1981
signed with lower right; signed, dated and
titled verso
Prov: private collection, Ottawa
ESTIMATE: 1,200/1,500

- 85** MT. RUNDLE FROM VERMILION LAKE
oil on masonite
12 x 16 in. / 30 x 41 cm. Dated: 1980
signed with monogram lower left; signed,
dated and titled verso
Prov: private collection, New Brunswick
ESTIMATE: 1,200/1,500

- 86** PRICKLY PEAR CACTUS IN LONG GRASS
oil on canvas board
12 x 16 in. / 30 x 41 cm. Dated: 1981
signed with lower left; signed, dated and
titled verso
Prov: private collection, Ottawa
ESTIMATE: 900/1,200

- 87** FISHING BOATS, PROVINCETOWN, MASS.
blue and black pencil on paper
14.25 x 17.25 in. / 36 x 44 cm. Dated: 1954
signed with monogram, dated, and titled
lower right
Ref: in 1954, Illingworth Kerr was in Massa-
chusetts studying with Hans Hofmann
Prov: Gold Design, Calgary, 1983 invitation
attached to back; private collection, Ottawa
ESTIMATE: 700/900

- 88** UNTITLED - ANTELOPE
lithograph on paper
12 x 9.75 in. / 30 x 25 cm.
signed with monogram in plate lower right;
embossed Kerr Estate chop lower right;
paper size: 15.75 x 11.5 in.; archival materi-
al throughout
Ref: the lithograph was printed on John
Snow's press - one of very few lithographs
by Illingworth Kerr
Prov: Canadian Art Galleries, Calgary, label
verso; private collection, Alberta
ESTIMATE: 300/500

STEVE KISS

[b.1933] CANADIAN

see *Founders of the A.C.A.*, by L.Greenfield,
pg.87 for another example of the artist's
work and *Dictionary of Canadian Artists -*
Vol.3, by C.MacDonald, pg.648 for biography

- 89** HAYING TIME
watercolour on paper
15 x 20 in. / 38 x 51 cm. Dated: 1983
signed and dated lower left; signed, dated
and titled verso; archival material throughout
ESTIMATE: 350/450

DOROTHY KNOWLES

[b.1927] CANADIAN

see *Dorothy Knowles Paintings 1964-1982*,
by T.Fenton, E.A.G. and biography in *Biog-
raphical Dictionary of Saskatchewan*
Artists, by M.Newman, pg.100, Fifth House
Publishing

- 90** GREY MOUNTAIN
acrylic on canvas
34.75 x 48 in. / 88 x 122 cm. Dated: 1981
signed, dated, and titled verso
Ref: see *Contemporary '88 Calgary*, by
M.Lavolette, pg.16, Olympic Art Festival,
1988, for biography and another example of
the artist's work - catalogue included in lot
Prov: Downstairs Gallery, Edmonton, label
verso
ESTIMATE: 5,000/7,000

91

UNTITLED –
LANDSCAPE WITH BULRUSHES
acrylic on canvas
9.25 x 12 in. / 23 x 30 cm. Dated: 1975
signed and dated lower right
Prov: acquired from the artist; ex-collection
Mr. and Mrs. Fenton, Calgary/Saskatoon
ESTIMATE: 1,250/1,500

ROBERT THEODORE KOST

[b.1936] CANADIAN

see *Dictionary of Canadian Artists – Vol.3*,
by C.MacDonald, pg.676 for biography

92

THE BLACKBIRDS
oil on canvas board
12 x 16 in. / 30 x 41 cm.
signed lower right; titled verso
Prov: private collection, Calgary
ESTIMATE: 150/250

TOYOHARA KUNICHIKA

[1835-1900] JAPANESE

93

UNTITLED –
KABUKI SCENE WITH FEMALE ARCHER
coloured triptych woodblock on paper
13.75 x 26.75 in. / 35 x 68 cm. Dated:
1881
signed; two vertical centerfolds; slight fading,
hinged with tape along upper edge
Ref: ex-collection Dr. Patrick, head of Asian
Studies, University of British Columbia
Prov: Joyce Williams Antique Prints, Vancouver,
label verso
ESTIMATE: 400/500

SCHOOL OF LANDSEER

[19/20th century] BRITISH

94

UNTITLED – WOLVES AND STAG
sepia and watercolour on paper
9.75 x 7 in. / 25 x 18 cm.
unsigned
Prov: private collection, B.C.
ESTIMATE: 400/500

CLAUDE LANGEVIN

[b.1942] CANADIAN

see *Dictionary of Canadian Artists – Vol.3*,
by C.MacDonald, pg.730 for biography

95

A L'ABANDON
oil on canvas
20 x 24 in. / 51 x 61 cm.
signed lower left; signed and titled verso
Prov: purchased from the artist
ESTIMATE: 1,200/1,500

96

FIN SEPTEMBRE
oil on canvas
8 x 10 in. / 20 x 25 cm.
signed lower left; signed and titled verso
Prov: purchased from the artist
ESTIMATE: 500/600

WILLIAM LANGLEY

[fl.1892] SCOTTISH

97

LOCH SEVERN CASTLE, SCOTLAND
watercolour on paper
14.5 x 20.75 in. / 37 x 53 cm. Dated: 1892
signed and dated lower right; titled verso;
laid down on paper board; acid stain extreme
edge under mat
Prov: Cameron Gallery, Langley, label
verso; private collection, B.C.
ESTIMATE: 800/1,200

SUSANNE LANSONIUS

[ca.1940] CANADIAN

born in Hungary, the artist has been living
in British Columbia since 1970's

98

UNTITLED – DANCING WARRIORS
oil on canvas
23.75 x 24 in. / 60 x 61 cm.
signed lower left; biography attached
Prov: Cameron Gallery, Langley, stamp
verso; private collection, B.C.
ESTIMATE: 1,200/1,500

RITA LETENDRE

A.R.C.A. *

[b.1928] CANADIAN

see *A.G.O. – the Canadian Collection*, by
the A.G.O., pg.242 and *By a Lady*, by M.
Tippett, pg.121, Penguin Books, 1992 for
discussion of this artist's contribution to the
Automatiste movement

99

ORION
oil on canvas
15 x 18 in. / 38 x 46 cm. Dated: 1963
signed and dated lower right; signed, dated,
titled and inscribed 'Paris' verso
Ref: Reta Letendre was on a Canada Council
grant painting in Paris during the period
1962-63
Prov: Galerie Camille Hebert, Montreal, label
verso
ESTIMATE: 3,500/4,500

ERNEST LINDNER

C.S.G.A., C.P.E., F.C.A., R.C.A.

[1897-1988] CANADIAN

see *Uprooted; the Life and Art of Ernest
Lindner*, by T.Heath, Fifth House, 1983 as
well as *The Mendel Art Gallery – Twenty-
Five Years of Collection*, by M.Teitelbaum,
Mendel Art Gallery, 1989 and *A.G.O. – The
Canadian Collection*, pg.243, A.G.O., 1970

100

UNTITLED – BODIL, THE ARTIST'S WIFE
oil on canvas board
24 x 19.75 in. / 61 x 50 cm. Dated: ca. 1940's
signed lower left
Ref: see *Saskatchewan: Art and Artists*, by
T.Fenton, pg.62, for drawing of Bodil Lindner
ca. 1940 in private collection, Saskatchewan
ESTIMATE: 2,000/2,500

1
0
1 UNTITLED –
MOTOR BOATS AND SAIL BOATS AT DOCK
pencil on paper
8.5 x 11 in. / 22 x 28 cm. Dated: ca. 1950's
signed lower left; archival mat front and back
Prov: estate of the artist
ESTIMATE: 500/700

1
0
2 UNTITLED – SKETCH OF TREE STUMP
pencil on paper
7 x 12 in. / 18 x 30 cm. Dated: ca. 1950's
signed lower left; archival mat front and back
Prov: estate of the artist
ESTIMATE: 500/700

VIVIAN LINDOE
A.S.A.
[b.1918] CANADIAN

1
0
3 PHOBIA #5/6
silkscreen on paper
17.75 x 12 in. / 45 x 30 cm. Dated: 1971
signed, dated, titled and numbered along
bottom; paper size: 23.5 x 16.75 in.;
archival mat
Prov: private collection, Calgary
ESTIMATE: 150/200

HAZEL LITZGUS
A.S.A., C.S.P.W.C.
[b.1927] CANADIAN
see *Alberta Art – Works From the A.A.F.*, by
W.McMullen, A.A.F., 1975 for biography
and *Dictionary of Canadian Artists – Vol.4*,
by C.MacDonald, pg.872, *Canadian Paper-*
backs, 1986 and *Artists of Alberta*, by
S.Baker, pg.4, U. of Alberta Press, 1980

1
0
4 KANANASKIS VALLEY
watercolour on paper
11 x 15 in. / 28 x 38 cm. Dated: 1990
signed and dated lower right; signed, titled
and inscribed verso; archival material
throughout
Prov: Masters Gallery, Calgary, label verso
ESTIMATE: 300/500

GLEN LOATES
R.C.A.
[b.1945] CANADIAN
see *The Art of Glen Loates*, by P.Duval,
Cerebus Pub., 1977; *Glen Loates Birds of*
North America, by R.James, Cerebus Pub.
1979 as well as *Dictionary of Canadian*
Artists – Vol.4, by C.MacDonald, pg.874, for
biography

1
0
5 DOWNY WOODPECKER #38/125
lithograph on paper
25.75 x 19.75 in. / 65 x 50 cm.
signed and numbered along bottom; titled on
certificate verso; embossed chop lower left;
paper size: 25.75 x 19.75 in.; archival mat
ESTIMATE: 200/400

WILLIAM MALTMAN
C.S.P.W.C.
[1901-1971] CANADIAN

1
0
6 STRAIT OF JUAN DE FUCA, VICTORIA
watercolour on paper
10.5 x 8.75 in. / 27 x 22 cm. Dated: 1934
signed and dated lower right; small repair
lower centre
Prov: purchased from Ross Maltman, the
son of the artist
ESTIMATE: 400/600

GEZA MARICH
[b.1913] CANADIAN
see *Dictionary of Canadian Artists – Vol.4*,
by C.MacDonald, pg.1104 for biography

1
0
7 LAURENTIANS
oil on canvas
24 x 36 in. / 61 x 91 cm.
signed lower right; titled verso
Prov: private collection, Calgary
ESTIMATE: 200/300

THOMAS MOWER MARTIN
O.S.A., R.C.A.
[1838-1934] CANADIAN
see *Early Painters and Engravers in*
Canada, by R.Harper, pg.217 for biography;
founding member of the O.S.A. and charter
member of the R.C.A.; illustrated *Canada*,
by W.Campbell, 1907

1
0
8 UNTITLED – FALLEN TREES
watercolour on paper
13 x 20.75 in. / 33 x 53 cm. Dated: ca. 1890
signed lower left; laid down on mat board;
titled and dated on labels verso
Prov: Petley Jones Gallery, Vancouver, and
Masters Gallery, Calgary, labels verso; pri-
vate collection B.C.
ESTIMATE: 1,000/1,500

1
0
9 UNTITLED – FOREST PASTORAL
watercolour on paper
8.75 x 5.5 in. / 22 x 14 cm.
signed lower right; rounded upper corners;
laid down on mat board
Prov: private estate, Ottawa
ESTIMATE: 200/400

1
1
0 UNTITLED – FOREST PASTORAL
watercolour on paper
10.25 x 6.25 in. / 26 x 16 cm. Dated: 1885
signed and dated lower right; laid down on
mat board
Prov: private estate, Ottawa
ESTIMATE: 200/400

LEONARD J. MATT

[fl.1989] CANADIAN

- 11** BOWEN ISLAND
watercolour and ink on paper
29.75 x 22.5 in. / 76 x 57 cm. Dated: 1989
signed lower right; signed, dated and titled
verso; archival mat front and back
Prov: West End Gallery, Edmonton, label
verso
ESTIMATE: 300/400

HENRIETTA MABEL MAY

A.R.C.A., B.C.S.A., C.G.P., F.C.A.

[1884-1971] CANADIAN

see *N.G.C. Catalogue of Paintings and Sculpture - Vol. III*, by R.Hubbard, pg. 210 and *Dictionary of Canadian Artists - Vol. 4*, by C.MacDonald, pg.1156 for biography; listed in *British Columbia Women Artists, 1885-1985*, by N.Tuele, Art Gallery of Greater Victoria

- 112** UNTITLED - FISHING BOATS IN HARBOUR
oil on paper board mounted on board
12 x 16 in. / 30 x 41 cm.
signed lower right
Prov: Kastel Gallery, Montreal
ESTIMATE: 3,000/4,000

ROBERT F.M. MCINNIS

[b.1942] CANADIAN

see *Spaces and Places - Eight Decades of Landscape Painting in Alberta*, by J.Ironside, pg.106 as well as *Dictionary of Canadian Artists - Vol. 4*, by C.MacDonald, addendum for biography

- 113** HIGH RIVER, ALTA.
oil on masonite
12 x 15.75 in. / 30 x 40 cm. Dated: 1984
signed and dated lower right; signed, dated
and titled verso
ESTIMATE: 300/500

DON MCINTOSH

[b.1927] CANADIAN

see *Dictionary of Canadian Artists - Vol. 4*, by C.MacDonald, pg.1027 for biography

- 114** UNTITLED - LANDSCAPE
watercolour on paper
10.5 x 13.75 in. / 27 x 35 cm.
signed lower right; archival mat
Prov: Petley Jones Gallery, Vancouver, label
verso
ESTIMATE: 200/300

PERICLE MENIN

[fl.1935] EUROPEAN

- 115** ORE TEROFINE
etching on paper
12.75 x 9.75 in. / 32 x 25 cm. Dated: 1935
signed, titled and inscribed along bottom;
paper size: 19.5 x 14 in.; archival mat front
and back
Prov: private collection, Calgary
ESTIMATE: 200/300

JOHN MEREDITH

R.C.A.

[b.1933] CANADIAN

see *Toronto Painting 1953-65*, by D.Reid, N.G.C., 1972, *John Meredith: Drawings 1957-80*, by I.Thom, A.G.G.V., 1980, *John Meredith: Fifteen Years*, by M.Fleming, A.G.O., 1974 and A.G.O. - *the Canadian Collection*, by the A.G.O., pg.303

- 116** SEPTEMBER 1975
oil on canvas
23.75 x 18 in. / 60 x 46 cm. Dated: 1975
signed and dated verso; titled on stretcher
Prov: Isaacs Gallery, Toronto, label verso
ESTIMATE: 3,000/4,000

- 117** UNTITLED - ABSTRACT COMPOSITION
coloured ink on paper
8.25 x 11 in. / 21 x 28 cm. Dated: 1975
signed and dated upper right
Prov: Isaacs Gallery, Toronto
ESTIMATE: 1,000/1,500

JANET HOLLY MIDDLETON

A.S.A.

[b.1922] CANADIAN

see *Dictionary of Canadian Artists - Vol. 4*, by C.MacDonald, pg.1205 for biography as well as *Artists of the Okanagan*, by J.Dubeta, published by the Okanagan Mainline Senior Writers and Publishers, 1988

- 118** MT. ASSINIBOINE
watercolour on paper
14.5 x 21.5 in. / 37 x 55 cm.
signed lower right; titled and inscribed
verso; archival material throughout
Prov: Masters Gallery, Calgary, label verso
ESTIMATE: 500/700

COLLEEN ANDERSON MILLARD

A.S.A.

[fl.1958] CANADIAN

see *Dictionary of Canadian Artists - Vol. 4*, by C.MacDonald, pg.1217 for biography

- 119** FISH CREEK
oil on canvas board
16 x 20 in. / 41 x 51 cm.
signed lower right; titled verso
Prov: private collection, Calgary
ESTIMATE: 150/250

DAVID BROWN MILNE

C.S.P.W.C.

[1882-1953] CANADIAN

see *David Milne*, ed. I.Thom, Vancouver Art Gallery, 1992 and *Reflections in a Quiet Pool - The Prints of David Milne*, by R.Tovell, N.G.C., 1980 for the definitive texts on this artist's career

120

ROCK IN THE BAY

watercolour on paper

14 x 19.75 in. / 36 x 50 cm. Dated: 1938 signed and dated lower right; bears titled in pencil verso; archival material throughout Ref: see *David Milne*, ed. I.Thom, pg.28 for another example of the artist's 1938 work in the collection of the N.G.C. - the artist lived at 6 Mile Lake from 1933 to 1939

Prov: Marlborough-Goddard Gallery; Katri-na Gladstone, Winnipeg

ESTIMATE: 18,000/22,000

JANET MITCHELL

A.S.A., C.S.P.W.C., R.C.A.

[b.1912] CANADIAN

see *Janet Mitchell, Life and Art*, by P.Armstrong, Hyperion Press, 1990 and *The N.G.C. Catalogue Paintings and Sculpture Vol. III: Canadian School*, by R.Hubbard, pg.219, for biography and painting in the N.G.C.

121

NEAR SALMON ARM B.C., 1945, OCTOBER

oil on paper board

11 x 14 in. / 28 x 36 cm. Dated: 1945

signed, dated and titled verso

Ref: exhibition sticker *Janet Mitchell Retrospective*, 1977, Glenbow - Alberta Institute, exhibition No. 1, verso; according to P.Armstrong, Janet took a painting trip with Luke and Vivian Lindoe by small open boat through the Shushwap to the Thompson River in the fall of 1945

Prov: ex-collection Dr. & Mrs. Key

ESTIMATE: 700/900

ALASDAIR MONRO

[fl.1943] CANADIAN

122

UNTITLED -**3RD STREET AND 17TH AVENUE**

oil on paper

6 x 8 in. / 15 x 20 cm.

signed lower right; archival material throughout

ESTIMATE: 150/250

123

3RD ST. S.W., DOWNTOWN

oil on paper

5.75 x 8 in. / 15 x 20 cm.

signed lower right; titled and inscribed verso; archival material throughout

Prov: Masters Gallery, Calgary, label verso

ESTIMATE: 150/250

FRANCIS DOUGLAS MOTTER

A.S.A.

[b.1913] CANADIAN

see *Founders of the A.C.A.*, by V.Greenfield, pg.94, for biography and *Artists of Alberta*, by S.Baker, pg.31, as well as *Printmaking in Alberta 1945-1985*, by B.Cochran, pg.12; biography in *Dictionary of Canadian Artists - Vol.4*, by C.MacDonald, pg.1317

124

UNTITLED - RURAL LANDSCAPE #10/12

etching on paper

3.75 x 2.75 in. / 10 x 7 cm.

signed and numbered along bottom; paper size: 10 x 7 in.; archival material throughout

ESTIMATE: 100/150

ALISON HOUSTON LOCKERBIE NEWTON

[1890-1967] CANADIAN

see *Images of the Land*, by P.Ainslie, pg.74 and 145 for biography and examples of the artist's graphic work; also see *Dictionary of Canadian Artists - Vol.5*, by C.MacDonald, pg.1369 for biography

125

LAKE LOUISE, BANFF

watercolour on paper

14.5 x 19.75 in. / 37 x 50 cm. Dated: ca. 1954

signed lower left; titled and inscribed with Winnipeg address verso; cardboard with 1954 date

Prov: Little Gallery, Winnipeg, label verso; private collection, Southern Alberta

ESTIMATE: 300/500

JAMES [JIM] MCLAREN NICOLL

A.S.A.

[1892-1986] CANADIAN

see *Paintings and Poetry - Jim Nicoll by Glenbow-Alberta Institute; Mountains and the Sky*, by L.Render, pg.199 and 200 for works in the collection of the Glenbow; biography in *Dictionary of Canadian Artists - Vol.5*, by C.MacDonald, pg.1382

126

KANANASKIS RIVER & MT. YAMNUSKA

pencil on paper

9 x 11.75 in. / 23 x 30 cm.

titled along bottom; with colour notes in various places in drawing; stain along left side; archival material throughout

Prov: private collection, Calgary

ESTIMATE: 300/400

127

CHINESE COURTYARD #A.P.

etching on paper

8.5 x 9.5 in. / 22 x 24 cm. Dated: 1979

signed in plate lower right; signed, dated, titled and numbered along bottom; paper size: 14.75 x 17 in.; archival mat

Ref: catalogue *Paintings and Poetry - Jim Nicoll*, published by Glenbow-Alberta Institute, 1977 included with lot; Old Chinatown, watercolour illustrated on back cover

Prov: private collection, Calgary

ESTIMATE: 200/300

MARION FLORENCE NICOLL

A.S.A., R.C.A.

[1909-1985] CANADIAN

see *Marion Nicoll, A Retrospective 1959-1979*, by The E.A.G., 1975; *Marion Nicoll R.C.A.*, by B.Joyner, Masters Gallery, 1979; *Marion Nicoll, Art and Influences*, by C.Jackson, Glenbow Museum, 1986; and *Founders of the A.C.A.*, by V.Greenfield, pg.94 for biography

1
2
8**SELF PORTRAIT #88/225**

clay print on paper

9.25 x 7 in. / 23 x 18 cm. Dated: 1979
signed, dated, titled and numbered along
bottom; paper size: 10 x 9.25 in.

Prov: private collection, Calgary

ESTIMATE: 200/300

BRUCE WILLIAM O'NEIL

A.S.A.

[b.1942] CANADIAN

see *Measure of Success: Graduates of the
A.C.A. 1963-1984*, by V.Greenfield, pg.102
for biography and another example of the
artist's work

1
2
9**WEDGE WITH BLACK CENTRE**

oil on canvas

48.5 x 42.5 in. / 123 x 108 cm. Dated: 1983
signed, dated and titled verso

Prov: private collection, Toronto

ESTIMATE: 1,000/1,500

RONALD N. OKEY

[b.1921] CANADIAN

born in England, the artist emigrated to
Canada in 1949 and lives in Ontario

1
3
0**HILLSIDE BIRCHES**

acrylic on masonite

24 x 18 in. / 61 x 46 cm.

signed lower right; titled on label verso

Prov: Johnson Gallery, Edmonton label
verso; private collection, Edmonton

ESTIMATE: 300/400

TONI ONLEY

A.R.C.A., B.C.S.A., C.S.P.W.C.

[b.1928] CANADIAN

see *Toni Onley: A Retrospective Exhibition*, by
T.Lindberg, 1978, Vancouver Art Gallery as
well as *Toni Onley: A Silent Thunder*, by
R.Boulet, Prentice Hall, 1981 and *Onley's Arc-
tic*, by T.Onley, Douglas and McIntyre, 1989

1
3
1**SUMMER SKY #12/39**

silkscreen on paper

11.25 x 15.25 in. / 29 x 39 cm. Dated: 1970
signed, titled and numbered along bottom;
paper size: 20.75 x 23 in.; archival mat

ESTIMATE: 300/500

1
3
2**CYPRESS #11/34**

silkscreen on paper

11.25 x 15 in. / 29 x 38 cm. Dated: 1973

signed, titled and numbered along bottom;
paper size: 20 x 22.25 in.; archival mat

ESTIMATE: 300/500

1
3
3**BETWEEN TWO POSTS #11/30**

silkscreen on paper

11.25 x 15 in. / 29 x 38 cm. Dated: 1974

signed, titled and numbered along bottom;
paper size: 20.5 x 23 in.; archival mat

ESTIMATE: 300/500

FRANKLIN PALMER

A.S.A., C.S.P.W.C., R.C.A.

[1912-1990] CANADIAN

see *Founders of the A.C.A.*, by L.Greenfield,
pg.96, for biography and another example
of the artist's work as well as *Dictionary of
Canadian Artists - Vol.5*, by C.MacDonald,
pg.1471 for biography

1
3
4**POOL & ROCKS**

oil on canvas

24 x 28 in. / 61 x 71 cm.

signed lower right; titled verso

Prov: private collection, Edmonton

ESTIMATE: 800/1,200

HERBERT SIDNEY PALMER

C.S.G.A., C.S.P.W.C., O.S.A., R.C.A.

[1881-1970] CANADIAN

see *A.G.O. - the Canadian Collection*, by
the A.G.O., pg.349, and *N.G.C. Catalogue
of Paintings and Sculpture - Vol. III*, by
R.Hubbard, pg. 241 for biography and
other examples

1
3
5**SUNSHINE AND SHADOW**

oil on paper board

10 x 12.75 in. / 25 x 32 cm. Dated: ca. 1935

signed lower left; signed and titled verso

Ref: according to the *Royal Canadian Acad-
emy of Arts*, by E. McMann the address
'170 St. Clements Avenue' on the back cor-
responds to the dates 1924-35; see A.G.O.,
pg.349 for another painting of a related sub-
ject done for a larger painting 'On the Hilltop'
Prov: grandson of the artist

ESTIMATE: 1,200/1,500

LAWRENCE ARTHUR COLLEY PANTON

C.S.P.W.C., O.S.A., R.C.A.

[1894-1954] CANADIAN

see *Towards a Lyrical Abstraction – the Art of L.A.C. Panton*, by C.Boyanoski, A.G.O. 1990; A.G.O. – *the Canadian Collection*, by the A.G.O., pg.351; N.G.C. *Catalogue of Paintings and Sculpture – Vol. III*, by R.Hubbard, pg. 241 for other examples

1
3
6**FARM ROAD**

watercolour on waterboard
15 x 18.75 in. / 38 x 48 cm. Dated: ca. 1937
signed lower left; titled on label verso;
archival mat front and back
Rev: Ontario Society of Artist's label verso,
no date; R.C.A.A. records indicate artist address
on back corresponds to the 1927-37 time period
Prov: private collection, British Columbia
ESTIMATE: 800/1,000

WILLIAM PARSONS

[1909-1982] CANADIAN

biography in *Dictionary of Canadian Artists*,
by C.MacDonald, Vol.5 pg.1511

1
3
7**ALGOMA, LAKE SUPERIOR –****FALLS ON AQUASABON RIVER**

oil on masonite
16 x 20 in. / 41 x 51 cm.
signed lower right; signed and titled verso
Prov: private collection, Calgary
ESTIMATE: 350/450

ALFRED PELLAN

A.R.C.A.

[1906-1988] CANADIAN

see *Pellan* by G.Lefebvre, McClelland and Stewart, 1973; *Alfred Pellan* by D.Buchanan, McClelland and Stewart, 1962 as well as N.G.C. *Catalogue of Paintings and Sculpture – Vol. III*, by R.Hubbard, pg.244 for biography and other examples

1
3
8**ELEMENTS #3/100**

silkscreen on paper
19.5 x 13 in. / 50 x 33 cm. Dated: 1968
signed, dated, titled and numbered along
bottom; GG embossed chop lower left;
paper size: 26 x 20 in.; archival mat front
and back
Ref: Alfred Pellan Retrospective, Contemporary
Art Museum and Musee de Quebec, opening
June 17 then travelling to Quebec, London,
Fredericton and Winnipeg
Prov: Montreal Museum of Fine Art, Art
Rental, Kaspar Gallery, Toronto, and Woltjen/
Udell Gallery, Edmonton, labels verso
ESTIMATE: 400/500

FREDA PEMBERTON-SMITH

C.S.P.W.C.

[b.1902] CANADIAN

see *Royal Canadian Academy of Arts 1880-1979*, by E.McMann, pg.379, for exhibition
list and *Dictionary of Canadian Artists – Vol.5*,
by C.MacDonald, pg.1582 for biography

1
3
9**GROUP SHOVELLING**

watercolour on paper
6.75 x 5.75 in. / 17 x 15 cm.
signed lower right; signed and titled verso;
archival mat front and back
Prov: purchased from the artist
ESTIMATE: 250/300

1
4
0**CLOTHESLINE**

watercolour on paper
18 x 14.75 in. / 46 x 37 cm.
signed lower right; archival mat front and
back
Prov: private collection, British Columbia
ESTIMATE: 350/450

1
4
1**NO LOT****STAN PHELPS**

[b.1949] CANADIAN

see *Spaces and Places – Eight Decades of
Landscape Painting in Alberta*, by J.Iron-
side, pg.65 for biography and another ex-
ample of the artist's work in the collection
of the A.A.F.

1
4
2**FULL BLOOM – RILEY PARK**

acrylic on canvas
24 x 30 in. / 61 x 76 cm. Dated: 1986
signed and dated lower right; signed, dated
and titled verso
Prov: Kensington Downtown Fine Art
Gallery, Calgary, label verso
ESTIMATE: 300/500

WALTER JOSEPH PHILLIPS

A.S.A., C.P.E., C.S.P.W.C., M.S.A. R.C.A

[1884-1963] CANADIAN

see *Walter J. Phillips*, by D.Scott, Ryerson
Press, 1947; *Walter J. Phillips, A Selection of
His Works and Thoughts*, by M.Gribbon,
N.G.C., 1978; *The Tranquility and the Turbu-
lence: The Life and Works of Walter J.
Phillips*, by R.Boulet, Loates Publishing, 1981

1
4
3**LONG BAY, KEEWATIN #18/50**

coloured woodblock on paper
7.25 x 14 in. / 18 x 36 cm. Dated: 1922
signed and dated with monogram in block
lower left; signed, titled and numbered
along bottom; archival material throughout
Ref: *Scott CW#32; MBL #62*, ed:50
Prov: consignor, New York, U.S.A.
ESTIMATE: 2,000/2,200

1
4
4

WEST ROAD – MOUNTAIN ROAD #22/100
coloured woodblock on paper
9 x 13 in. / 23 x 33 cm. Dated: 1942
signed, titled and numbered along bottom;
archival material throughout
Ref: *Scott CW#130*; *MBL #230*, ed:100; his
notebooks record that in 21 days he was
able to produce 50 prints
Prov: consignor, New York, U.S.A.
ESTIMATE: 2,000/2,200

1
4
5

RED RIVER ROAD #34/100
coloured woodblock on paper
7.75 x 8 in. / 20 x 20 cm. Dated: 1923
signed with monogram in block lower right;
signed, titled and numbered along bottom;
archival material throughout
Ref: *Scott CW#37*; *MBL #69*, ed:100; for
the pencil sketch, etching, and watercolour
of the same subject see *Walter J. Phillips* by
M.Gribbon, N.G.C., 1978
Prov: consignor, New York, U.S.A.
ESTIMATE: 800/1,000

1
4
6

THE DOCK #50/100
coloured woodblock on paper
6.25 x 9.5 in. / 16 x 24 cm. Dated: 1922
signed and dated with monogram in block
lower right; signed, titled and numbered
along bottom; archival material throughout
Ref: *Scott CW#33*; *MBL #63*, ed:100;
Phillips intended on using *The Dock* for an
unpublished manuscript, *Wet Paint*
Prov: consignor, New York, U.S.A.
ESTIMATE: 800/1,000

1
4
7

VENUS AND THE PRIEST #57/100
coloured woodblock on paper
10 x 13.75 in. / 25 x 35 cm. Dated: 1930
signed with monogram in block lower right;
signed, titled and numbered along bottom;
archival material throughout
Ref: *Scott CW#94*; *MBL #129*, ed:150
Prov: consignor, New York, U.S.A.
ESTIMATE: 700/900

1
4
8

WHITE WILDERNESS #33/50
coloured woodblock on paper
5.5 x 10 in. / 14 x 25 cm. Dated: 1918
signed with monogram in block lower right;
signed, titled and numbered along bottom;
small repair and stain lower left margin;
archival material throughout
Ref: *Scott CW #7*; *MBL #37A* first state
ed:50 [plus second state ed:unknown];
ESTIMATE: 700/900

1
4
9

WINTER SUNSHINE
coloured woodblock on paper
4.25 x 4 in. / 11 x 10 cm. Dated: 1919
monogram in block lower right; signed
along bottom; archival material throughout
Ref: *Scott CW#18.5*; *MBL#50B* edition: un-
known; Christmas card for 1919; two
blocks; included in *Winter Woodcuts* folio of
1936 in edition of 100
Prov: Kensington Downtown Fine Art Gallery,
Calgary, label verso; private collection, Calgary
ESTIMATE: 500/700

1
5
0

THE LAKE #57/100
coloured woodblock on paper
5.25 x 4.75 in. / 13 x 12 cm. Dated: 1918
signed with monogram in block lower right;
signed and titled along bottom; numbered
in margin below mat
Ref: *Scott CW #5* 2 states of 50; *MBL*
#35B, first state ed:50, second state ed:100
Prov: Smith's House of Art, Winnipeg, label
verso
ESTIMATE: 500/700

ROBERT WAKEHAM PILOT

R.C.A.

[1898-1967] CANADIAN

see *A.G.O. – the Canadian Collection*, by
the A.G.O., pg.378 and N.G.C. *Catalogue of*
Paintings and Sculpture – Vol. III, by R.Hub-
bard, pg. 249

1
5
1

UNTITLED – QUEBEC SCENE
etching on paper
7.75 x 8.5 in. / 20 x 22 cm.
signed in plate lower right; paper size: 11 x
13.25 in.; archival mat front and back
Ref: in *Printmaking in Quebec, 1900-1950*, by
D.Martin, pg.118 the author refers to Pilot as
'one of the most important Quebec printmak-
ers of the first half of the 20th century'; most
of Pilot's etchings done prior to 1938 when
he left his position as professor of engraving
at the Ecole des Beaux Arts, Montreal
Prov: private collection, Montreal
ESTIMATE: 300/500

MICHAEL PISKO

A.S.A.

[b.1913] CANADIAN

several illustrations for the *Alberta Society*
of Artists Highlights magazine in the 1950's;
biography in *Dictionary of Canadian Artists*
– *Vol.6*, by C.MacDonald, pg.1718

1
5
2

NO. 8 COAL MINE, LETHBRIDGE, 1946
oil on canvas board
9.75 x 12.75 in. / 25 x 32 cm. Dated: 1947
signed lower right; titled and dated verso;
minor dents upper left and centre
Ref: #12 in Bowman Museum, Lethbridge
show of M. Pisko's work
Prov: purchased from the artist; private col-
lection, Southern Alberta
ESTIMATE: 200/300

- 153** WEST OF COLEMAN,
NEAR SENTINEL, 1947
oil on paper board
9.75 x 12.75 in. / 25 x 32 cm. Dated: 1947
signed lower right; titled and dated verso
Ref: #14 in Bowman Museum, Lethbridge
show of M. Pisko's work
Prov: purchased from the artist; private collection, Southern Alberta
ESTIMATE: 200/300

PERCY [TWO GUN] PLAIN WOMAN

[1895-1961] CANADIAN

according to the *Calgary Herald*, the artist started painting in 1935. In later years he attended the Banff School of Fine Art. His nephew was well known Alberta artist, Gerald Tailfeathers

- 154** UNTITLED - INDIAN PORTRAIT
coloured pencil on paper
9.75 x 7.75 in. / 25 x 20 cm. Dated: 1936
signed with initials and dated lower right; acid stains around edges
Ref: *Calgary Herald* obituary on artist attached verso; possibly a drawing of the Blood chief, Shot Both Sides from a portrait by Wynold Reiss, who had an art school in Montana
Prov: Gainsborough Galleries, Calgary label verso; private collection, Alberta
ESTIMATE: 200/400

BARTLEY ROBILLIARD PRAGNELL

A.S.A.

[1907-1966] CANADIAN

see *Bart Pragnell: A Retrospective*, by G.Moppett, Mendel Art Gallery, Saskatoon, 1990; biography in *Dictionary of Canadian Artists*, by C.MacDonald, Vol.6 pg.1811

- 155** UNTITLED - CALGARY, ABOUT 1946
watercolour on paper
11.5 x 9 in. / 29 x 23 cm. Dated: ca. 1946
signed with estate stamped signature lower right; bears title and estate stamp with brother's signature verso; archival mat front and back
Prov: estate of the artist
ESTIMATE: 600/800

- 156** SHOPPERS AFTER FOUR
watercolour with ink on paper
10 x 14 in. / 25 x 36 cm. Dated: 1950
signed and dated lower right; titled verso; small tear lower left margin; archival mat front and back
Prov: estate of the artist
ESTIMATE: 600/800

GASTON REBRY

[b.1933] CANADIAN

biography in *Dictionary of Canadian Artists*, by C.MacDonald, Vol.7 pg.1959

- 157** ST. MATHIEU DU PARC
oil on canvas
16 x 20 in. / 41 x 51 cm. Dated: 1992
signed lower right; signed, dated and titled verso
Prov: purchased from the artist
ESTIMATE: 1,000/1,200

- 158** SOLEIL COUCHAND
oil on canvas
12 x 10 in. / 30 x 25 cm. Dated: 1992
signed lower right; signed, dated and titled verso
ESTIMATE: 550/650

JACK REPPEN

O.S.A.

[1933-1964] CANADIAN

see *Jack Reppen: A Retrospective Look*, by A.Rockman, *Canadian Art* magazine, Sept. 1964 as well as *A.G.O. - the Canadian Collection*, by the A.G.O., pg.392, for biography and other examples

- 159** UNTITLED -
ABSTRACT COMPOSITION IN YELLOW
mixed media on paper and board
12.5 x 15 in. / 32 x 38 cm. Dated: 1962
signed and dated lower right
Ref: see *A.G.O.*, pg.392 for another painting from the same time period; he was strongly influenced by the weathered walls after a trip to Mexico at about this time
ESTIMATE: 1,250/1,500

LEONARD RICHMOND

[ca.1912-1965] CANADIAN

exhibition list *Montreal Museum of Fine Arts - Spring Exhibitions 1880-1970*, by E.McMann, pg.322, *U. of Toronto Press*, 1988 and listed in *Check List of the War Collection*, by R.Wodehouse, pg.50, N.G.C.

- 160** MOUNT ASSINIBOINE
watercolour on illustration board
15.75 x 13.75 in. / 40 x 35 cm.
signed lower right; titled on label verso
Prov: Yaneff Gallery, Toronto, label verso
ESTIMATE: 1,250/1,500

JACK RIGAUX

[b.1951] CANADIAN

see *Dictionary of Canadian Artists - Vol.7*, by C.MacDonald, pg.2107 for biography

161

UNTITLED - ALBERTA FALL

oil on canvas

36 x 54.25 in. / 91 x 138 cm.

signed lower left

Ref: it was by virtue of this painting that Jack Rigaux received an A.C.A. scholarship
Prov: by descent of the artist's family; private collection, Alberta

ESTIMATE: 800/1,000

162

UNTITLED - ALBERTA FOOTHILLS STORM

oil on masonite

29.5 x 39.5 in. / 75 x 100 cm. Dated: 1969

signed and dated lower left

Prov: acquired from the artist; private collection, Alberta

ESTIMATE: 600/800

163

UNTITLED - ALBERTA WINTER

watercolour on paper

11.25 x 14.75 in. / 29 x 37 cm. Dated: 1982

signed and dated lower left

Prov: acquired from the artist; private collection, Alberta

ESTIMATE: 200/400

RALPH JEAN RIGAUX

[fl.1990] CANADIAN

Ralph Rigaux is the uncle of Jack Rigaux and lives in Southern Alberta

164

OLD CHIEF

oil on canvas

16 x 20.5 in. / 41 x 52 cm. Dated: 1990

signed lower left; titled on plaque

Ref: Jenkins Ranch is in the Pincher Creek area of Southern Alberta

Prov: private collection, Alberta

ESTIMATE: 300/500

165

UNTITLED - OLD MAN RIVER

oil on canvas

19.75 x 30.5 in. / 50 x 77 cm. Dated: 1990

signed and dated lower left

Prov: private collection, Alberta

ESTIMATE: 500/700

ARTHUR ROBERTS

[fl.1968] CANADIAN

166

UNTITLED - MOUNTAIN LANDSCAPE

oil on masonite

8 x 10 in. / 20 x 25 cm.

signed lower left

Prov: private collection, Calgary

ESTIMATE: 200/300

CLIFFORD FEARD ROBINSON

A.S.A., C.S.G.A., F.C.A.

[b.1917] CANADIAN

see *Printmaking in Alberta 1945-1985*, by B.Cochran, pg.119; and *Images of the Land, Canadian Block Prints 1919-1945*, by P.Ainslie, and *The Society of Canadian Painter-Etchers and Engravers in Retrospect*, by A.oko, pg.76, Art Gallery of Hamilton, 1981

167

UNTITLED - VIEW OF A HOUSE

conte on paper

12 x 15.5 in. / 30 x 39 cm.

signed with initials lower right and lower left; archival mat front and back

Prov: purchased from the artist; private collection, Southern Alberta

ESTIMATE: 200/300

168

SMALL FARM, NEAR BASSANO

linoblock on paper

4.25 x 4.5 in. / 11 x 11 cm. Dated: ca. 1942

signed and titled along bottom; paper size: 5.25 x 6 in.; signed on opposite side of print - paper very fine tissue; archival material throughout; unframed

Ref: illustrated in *Images of the Land: Canadian Block Prints 1919-1945*, by P.Ainslie, pg.150

Prov: purchased from the artist; private collection, Southern Alberta

ESTIMATE: 100/150

169

NO LOT

WILLIAM RONALD

R.C.A.

[b.1926] CANADIAN

see *Ronald: 25 Years*, by Robert McLaughlin Gallery, 1973 and *N.G.C. Catalogue of Paintings and Sculpture - Vol. III*, by R.Hubbard, pg. 268 for biography and other examples

170

UNTITLED - ABSTRACT COMPOSITION

watercolour and ink on paper

14.5 x 20 in. / 37 x 51 cm. Dated: 1952

signed and dated lower centre; biography attached verso

Ref: see *Toronto Painting 1953-65*, by D.Reid, catalogue #9 for a similar painting in the collection of the Robert McLaughlin Gallery, Oshawa

Prov: Emmett's Framing, Toronto, label verso

ESTIMATE: 2,000/2,500

W. SAILAW

[20th century] EUROPEAN

171

THE HOUSES OF PARLIAMENT

etching on paper
3.5 x 5.75 in. / 9 x 15 cm.
signed, titled and inscribed along bottom;
archival material throughout

TOGETHER WITH

A GLIMPSE OF ST. PAUL'S
etching on paper
6 x 3.5 in. / 15 x 9 cm.
signed, titled and inscribed along bottom
LOT OF TWO - ESTIMATE: 150/200

J. HENRY SANDHAM

O.S.A., R.C.A.

[1841-1910] CANADIAN

see *A.G.O. - the Canadian Collection*, by the A.G.O., pg.408; *N.G.C. Catalogue of Paintings and Sculpture - Vol. III*, by R.Hubbard, pg. 272 and *Early Painters and Engravers in Canada*, by R.Harper, pg.778 for biography and other examples

172

UNTITLED -

WINTER LANDSCAPE WITH SUNSET
oil on canvas
24 x 34 in. / 61 x 86 cm.
signed with initials lower right; artist's label verso
Prov: ex-collection, Paul Duval, Toronto
ESTIMATE: 3,000/5,000

NOBORU SAWAI

[b.1931] CANADIAN

see *Printmaking in Alberta 1945-1985*, by B.Cochran, pg.127 and *Songs of Spring - Noboru Sawai 1972-1984*, by L.Dompiere, Agnes Etherington Art Centre, 1984, for biography and other examples; the Nickle Arts Museum's retrospective show of the artist's work is planned for February, 1994

173

PORTRAIT OF ARTIST IN HIS NEW GOLD VEST #8/30

coloured etching on paper
23.25 x 17.75 in. / 59 x 45 cm.
signed, titled, and numbered along bottom;
paper size: 26.25 x 20.5 in.; archival mat front and back; slight colour bleed along top margin
Prov: private collection, Calgary
ESTIMATE: 300/400

174

HONOURABLE CURATOR #16/100

etching on paper
19.75 x 25.5 in. / 50 x 65 cm. Dated:
signed, titled and numbered lower right;
some staining in margins
Ref: illustrated in *Songs of Spring - Noboru Sawai 1972-1984*, by L.Dompiere, catalogue number 6
Prov: Winnipeg Art Gallery, Art Rental, Winnipeg, label verso; private collection, Winnipeg
ESTIMATE: 300/400

CARL FELLMAN SCHAEFER

C.G.P., C.S.G.A., C.S.P.W.C., R.C.A.

[b.1903] CANADIAN

see *Carl Schaefer Retrospective Exhibition*, by G.Johnston, Sir George Williams University, 1969; *A.G.O. - the Canadian Collection*, by the A.G.O., pg.410; and *N.G.C. Catalogue of Paintings and Sculpture - Vol. III*, by R.Hubbard, pg. 275

175

LIGHT ON WATER

watercolour on paper
11.25 x 14 in. / 29 x 36 cm. Dated: 1935
signed and dated lower left; inscribed 'Ex. Eatons 1935 w.c. show' verso; titled on backing
Prov: private collection, British Columbia
ESTIMATE: 1,800/2,200

JOHN RALPH SCHNURRENBERGER

[ca.1940] CANADIAN

176

HIGH COUNTRY CORRAL

oil on canvas board
12 x 16 in. / 30 x 41 cm.
signed lower left; signed and titled verso
Prov: private collection, Calgary
ESTIMATE: 600/800

18TH CENTURY BELGIAN SCHOOL

177

UNTITLED - INTERIOR OF A HOUSE WITH SEATED WOMAN

oil on canvas
14.25 x 11.5 in. / 36 x 29 cm.
unsigned; some age cracking
Prov: purchased in Belgium; by descent to private collection, Southern Alberta
ESTIMATE: 500/700

19TH/20TH CENTURY BELGIAN SCHOOL

178

UNTITLED - INTERIOR OF A HOUSE

oil on canvas
12 x 15.75 in. / 30 x 40 cm.
signed lower right
Prov: purchased 1900-1910 in Belgium; by descent to private collection, Southern Alberta
ESTIMATE: 400/600

179

UNTITLED - INTERIOR OF A HOUSE

oil on canvas
12 x 15.75 in. / 30 x 40 cm.
signed lower left; some scratches lower foreground
Prov: purchased 1900-1910 in Belgium; by descent to private collection, Southern Alberta
ESTIMATE: 400/600

19TH CENTURY SCOTTISH SCHOOL

180

UNTITLED – SCOTTISH LOCH AT SUNSET
gouache on illustration board
11.5 x 18.5 in. / 29 x 47 cm. Dated: ca. 1876
framed with newspaper backing dated
1876; gilded mat and ornamental frame
Prov: estate of Margaret Kirby, Victoria
ESTIMATE: 400/600

19TH CENTURY CANADIAN SCHOOL

181

ACROSS THE ST. LAWRENCE –
MONTMORENCY FALLS IN THE DISTANCE
watercolour on paper
8 x 10 in. / 20 x 25 cm. Dated: 1869
titled and dated verso
Prov: Laing Galleries, Toronto, label verso
ESTIMATE: 400/600

182

SHIP HEAD, GASPE, AUG. '93
watercolour on paper
15 x 21.25 in. / 38 x 54 cm. Dated: 1893
signed with initials W.B.L., dated and titled
lower right; laid down on paperboard
Prov: Laing Galleries, Toronto
ESTIMATE: 400/600

183

UNTITLED –
PREPARING TO BUTCHER THE MOOSE
mixed media on birch bark
4.5 x 7.5 in. / 11 x 19 cm.
label verso 'A Series of sketches on birch
bark torn off of the roof of the cabin whilst in
the woods, March 1853'; Denglas
Prov: Laing Galleries, Toronto
ESTIMATE: 300/500

HERBERT OTTO SELLIN

[b.1943] CANADIAN

see *A Measure of Success: Graduates of
the A.C.A. 1963-1984*, by V.Greenfield,
pg.114, A.C.A., 1985 for biography and an-
other example of the artist's work

184

#2 SKYLINE, BRUSHY MTN.
BRAGG CREEK, 1978
oil on masonite
16 x 24 in. / 41 x 61 cm. Dated: 1978
signed and dated lower right; signed, dated
and titled verso
Prov: private collection, Calgary
ESTIMATE: 600/800

185

SUNSET, NEAR SWIFT CURRENT, SASK.
oil on masonite
16 x 24 in. / 41 x 61 cm. Dated: 1992
signed and dated lower right; signed, dated
and titled verso
Prov: artist's biography attached verso
ESTIMATE: 600/800

186

OLD WAGON IN SNOW
oil on masonite
12 x 18 in. / 30 x 46 cm. Dated: 1993
signed and dated lower right; signed, dated
and titled verso
Prov: artist's biography attached verso
ESTIMATE: 400/500

MARGARET SHELTON
A.S.A.

[1915-1984] CANADIAN

see *Margaret Shelton: Block Prints 1936-
1984*, by P.Ainslie, Glenbow Museum; and
Printmaking in Alberta 1945-1985, by
B.Cochran, pg.132; and *Images of the
Land, Canadian Block Prints 1919-1945*, by
P.Ainslie, for biography and other examples
of the artist's work

187

CASTLE MOUNTAIN #58/100
coloured linoblock on paper
4.5 x 5.75 in. / 11 x 15 cm.
signed, dated 1979, titled and numbered
along bottom; archival mat front and back
Ref: *MSBP #82*, in five colours; ed:300; ex-
hibited C.P.E. 30th Annual exhibition, 1946
Prov: private collection, Quebec
ESTIMATE: 350/450

188

MORAINÉ LAKE
linoblock on paper
4 x 5 in. / 10 x 13 cm. Dated: 1980
signed, dated and titled along bottom;
archival mat front and back
Ref: *MSBP #161*, one colour – red; Christ-
mas card
Prov: private collection, Southern Alberta
ESTIMATE: 250/350

DEBORAH LOUGHEED SINCLAIR
A.S.A.

[b.1953] CANADIAN

189

SUMMIT TO SUMMIT – MT. TEMPLE
acrylic on canvas
24 x 42 in. / 61 x 107 cm. Dated: 1987
signed lower left; signed, dated, titled and
artist number #467 verso
Prov: Kensington Fine Art Gallery, Calgary,
label verso
ESTIMATE: 750/1,000

190

WINGS – RUNDLE
acrylic on canvas
20 x 25 in. / 51 x 64 cm. Dated: 1984
signed lower right; signed, dated, titled and
artist number #341 verso
Prov: Kensington Fine Art Gallery, Calgary,
label verso
ESTIMATE: 500/700

- 191** COCHRANE FARM
acrylic on canvas
20 x 25 in. / 51 x 64 cm. Dated: 1986
signed lower right; signed, dated, titled and
artist number #450 verso
Prov: Kensington Fine Art Gallery, Calgary,
label verso
ESTIMATE: 500/700

ROBERT SINCLAIR

C.S.P.W.C., R.C.A.

[b.1939] CANADIAN

see *Mountains and the Sky*, by L.Render,
pg.206 for other examples of the artist's work
in the collection of the Glenbow Museum

- 192** MTS
watercolour on paper
5 x 8.5 in. / 13 x 22 cm. Dated: 1977
signed, dated and titled along bottom;
signed, dated and titled verso; archival mat
Prov: private collection, Calgary
ESTIMATE: 250/350

- 193** HLLSTP
watercolour on paper
5.5 x 8.5 in. / 14 x 22 cm. Dated: 1980
signed, dated and titled along bottom;
signed, dated and titled verso; archival mat
Prov: private collection, Calgary
ESTIMATE: 250/350

GORDON APPELBE SMITH

B.C.S.A., C.G.P., C.P.E., R.C.A.

[b.1919] CANADIAN

see A.G.O. - *the Canadian Collection*, by
the A.G.O., pg.423 as well as *N.G.C. Cata-
logue of Paintings and Sculpture - Vol. III*,
by R.Hubbard, pg. 283 for biography and
other examples

- 194** CREEK
oil on masonite
18.25 x 30.25 in. / 46 x 77 cm. Dated: ca. 1955
signed lower right; titled and bears date on
label verso
Ref: 48th Annual Exhibition, British Colum-
bia Society of Artists, label verso - held Feb.
4-22, 1958; N.G.C. includes G.Smith paint-
ing awarded first prize in 1955 Biennial
Prov: Bau-Xi Gallery, and Heffel Gallery,
Vancouver, labels verso
ESTIMATE: 1,500/2,000

- 195** IIA #36/75
silkscreen on paper
18.5 x 18.5 in. / 47 x 47 cm.
signed, titled, and numbered along bottom;
paper size: 21.25 x 20 in.
ESTIMATE: 150/250

- 196** DIVIDED RED #34/50
silkscreen on paper
20 x 24 in. / 51 x 61 cm.
signed, titled, and numbered along bottom;
paper size: 20.75 x 29.5 in.; archival mat;
some handling marks and scuffs
Prov: Vancouver Art Gallery Art Rental and
Woltjen/Udell Gallery, Edmonton, labels
verso
ESTIMATE: 150/250

JOHN SNOW

A.S.A., C.S.G.A., R.C.A.

[b.1911] CANADIAN

see *John Snow: Four Decades*, by M.Joslin,
E.A.G., 1990 and *Founders of the A.C.A.*, by
V.Greenfield, pg.101 and pg.65; and *Print-
making in Alberta 1945-1985*, by
B.Cochran, pg.137 for biography and other
examples of the artist's work

- 197** VICTORIA #11/30
lithograph on paper
14 x 17.75 in. / 36 x 45 cm.
signed, titled, and numbered along bottom;
paper size: 18 x 22 in.
Prov: private collection, Calgary
ESTIMATE: 150/250

WILLIAM LEWY LEROY STEVENSON

A.S.A.

[1905-1966] CANADIAN

a recent retrospective *W.L.Stevenson,
1926-1966*, exhibition was held at the
E.A.G. as well as the Nickle Arts Museum;
see *Founders of the A.C.A.*, by V.Green-
field, pg.103 for biography and another ex-
ample of the artist's work pg.10

- 198** UNTITLED - STILL LIFE WITH TOBY JUG
oil on board
20 x 25.5 in. / 51 x 65 cm.
signed lower right; crack extreme right
Ref: included in the *W.L. Stevenson 1926 -
1966* exhibition held at the E.A.G. and the
Nickle Arts Museum, Calgary and used on
the invitation for the Nickle Arts Museum
opening
Prov: private collection, Calgary
ESTIMATE: 2,000/2,500

- 199** SPRING BOUQUET
oil on board
14 x 12 in. / 36 x 30 cm.
signed and titled verso
Ref: included in the *W.L. Stevenson 1926 -
1966* exhibition held at the E.A.G. and the
Nickle Arts Museum, Calgary
Prov: Canadian Art Galleries, Calgary, label
verso; private collection, Calgary
ESTIMATE: 500/700

KATHERINE SURREIDGE

[b.1949] CANADIAN

200

SPANISH BANKS SERIES #38/100
hand-coloured lithograph on paper
7.25 x 10.5 in. / 18 x 27 cm. Dated: 1988
signed, dated, titled and numbered along
bottom; paper size: 9.75 x 12.75 in.;
archival mat
Prov: Petley Jones Gallery, Vancouver, label
verso

**TOGETHER WITH
UNKNOWN - STELA**

[fl.1968] AMERICAN

UNTITLED - ABSTRACT COMPOSITION
relief print on paper
8 x 10 in. / 20 x 25 cm. Dated: 1968
signed and dated lower right; inscribed
'Christmas Edition' in margin below mat;
paper size: 12 x 14.25 in.; archival mat
Prov: Petley Jones Gallery, Vancouver, label
verso

LOT OF TWO - ESTIMATE: 200/300

ROBERT DAVID SYMONS

[1898-1973] CANADIAN

see *Norman Mackenzie Art Gallery News*,
Dec. 1970, by T.Fenton as well as *Robert D.
Symons/ William Christian Symons*, by
L.Muehlenbachs, E.A.G., 1975

201

POOL IN A WHEATFIELD
watercolour on paper
11 x 13.5 in. / 28 x 34 cm. Dated: 1966
signed lower right; signed and titled on
backing; laid down on mat board; archival
mat front and back
Ref: exhibited at the 1970 Norman Macken-
zie Art Gallery show, N.G.C.'s 1971 *Water-
colour Painters from Saskatchewan*, and
the 1975 E.A.G. show; E.A.G. catalogue
signed by the artist's wife included
Prov: from the collection of the artist's wife;
ex-collection Mr. and Mrs. Fenton, Cal-
gary/Saskatoon
ESTIMATE: 500/600

MILDRED VALLEY THORNTON

[1890-1967] CANADIAN

see *Mildred Valley Thornton, 1890-1967*, by
Butler Galleries and Westbridge Fine Arts; bi-
ography in *Biographical Dictionary of
Saskatchewan Artists*, by M.Newman, pg.252

202

UNTITLED - B.C. LANDSCAPE
watercolour on paper
6.25 x 9.25 in. / 16 x 23 cm. Dated: ca. 1947
signed with initials lower left; laid down on
paper board; some fading
Ref: *Mildred Valley Thornton, 1890 - 1967*,
by Butler Galleries included with lot
Prov: Richmonds Art Limited, Vancouver,
label verso; private collection, Calgary
ESTIMATE: 200/300

L. TONIN

[20th century] CANADIAN

203

LA COLLANA D'AMETISTE -
THE AMETHYST NECKLACE
oil on canvas board
19.5 x 15.5 in. / 50 x 39 cm.
signed with initials lower left
Prov: European Art Salon, Edmonton, label
verso; private estate, Edmonton
ESTIMATE: 150/250

204

UNTITLED - RESTING FIGURE
oil on illustration board
12.5 x 16.75 in. / 32 x 43 cm.
signed lower right
Prov: European Art Salon, Edmonton, label
verso; private estate, Edmonton
ESTIMATE: 150/250

HAROLD BARLING TOWN

R.C.A.

[1924-1991] CANADIAN

see *Town*, by D.Burnett, A.G.O., 1986 and ex-
hibition list *Montreal Museum of Fine Arts -
Spring Exhibitions 1880-1970*, by E.McMann,
pg.378 and *N.G.C. Catalogue of Paintings
and Sculpture - Vol. III*, by R.Hubbard, pg.
316 for biography and other examples

205

THE FIREMAN - CHARLES CHAPLIN &
EDNA PARVIANCE, 1916 #15/166
lithograph on paper
11.75 x 17 in. / 30 x 43 cm. Dated: 1970
signed, dated, and numbered upper left;
paper size: 14 x 20 in.; tape stains in upper
corners
Ref: in 1971 H.Town held a series of shows
titled *Silent Stars, Sound Stars, Film Stars* in
Stratford, Chicago, Toronto and Detroit
Prov: Mazelow Gallery, Toronto, label verso
ESTIMATE: 300/500

C. TREVOR

[20th century] SCOTTISH

206

MOOR OF RANNOCK,
PERTHSHIRE, SCOTLAND
watercolour on paper
7.25 x 11 in. / 18 x 28 cm.
signed lower left; titled verso
Prov: Richardson Art Gallery, Winnipeg,
label verso; private collection, Alberta
ESTIMATE: 300/500

JOHN DAVENALL TURNER

A.S.A.

[1900-1980] CANADIAN

see *Sunfield Painter, The Reminiscences of John Davenall Turner*, by J. Turner, University of Alberta Press, 1982 and *The Artful Codger*, by J. Turner, Whyte Foundation, Banff, 1978

207

SNOW COVERED FIELD, EVENING

oil on masonite

18 x 24 in. / 46 x 61 cm.

signed lower right; titled on frame verso

Prov: private collection, Calgary

ESTIMATE: 500/700

FREDERICK J. TYMOSHENKO

[b.1938] CANADIAN

208

LIFE STEM #22/50

silkscreen on paper

23.25 x 17.25 in. / 59 x 44 cm. Dated: 1978

signed, dated, titled and numbered along bottom; embossed chop lower left; paper size: 26.75 x 20.25 in.

Prov: West End Gallery, Edmonton, label verso

ESTIMATE: 150/250

LEON UNDERWOOD

[1890-1975] BRITISH

see *A History of Wood Engraving*, by A. Garrett, pg.398 and *Leon Underwood*, by C. Neve, Thames and Hudson, 1974

209

UNTITLED - ELEPHANT

woodblock on paper

7.25 x 6.25 in. / 18 x 16 cm.

signed lower right; paper size: 8.25 x 8 in.; some paper loss in margins; archival material throughout

Prov: private collection, Vancouver

ESTIMATE: 300/400

TONY URQUHART

A.R.C.A., C.S.G.A., C.S.P.W.C., O.S.A.

[b.1934] CANADIAN

see *A.G.O. - the Canadian Collection*, by the A.G.O., pg.483 *N.G.C. Catalogue of Paintings and Sculpture - Vol. III*, by R. Hubbard, pg. 318

210

SUMMER OF '60

ink on paper

12 x 17.5 in. / 30 x 44 cm. Dated: 1960

signed, dated and titled lower right

ESTIMATE: 200/400

211

UNTITLED - GARDEN VIEW

ink on paper

8 x 8 in. / 20 x 20 cm. Dated: 1965

signed and dated upper right

ESTIMATE: 200/400

JOAN VAN BELKUM

A.S.A.

[ca.1947] CANADIAN

212

WINTERBURN SNOW

oil on linen

18 x 24 in. / 46 x 61 cm. Dated: 1981

signed lower right; signed, dated and titled on stretcher

Prov: private collection, Southern Alberta

ESTIMATE: 200/300

FREDERICK ARTHUR VERNER

O.S.A., A.R.C.A.

[1836-1928] CANADIAN

see *The Last Buffalo*, by J. Murray, Pagurian Press, 1984 as well as *N.G.C. Catalogue of Paintings and Sculpture - Vol. III*, by R. Hubbard, pg. 324 and *Early Painters and Engravers in Canada*, by R. Harper, pg.316 for biography and other examples

213

INDIANS IN A CANOE, 1880

watercolour on paper

13.75 x 23 in. / 35 x 58 cm. Dated: 1880

signed and dated lower right; titled on label verso; hinged along top

Ref: This was a popular image for Verner. Joan Murray illustrates three related images in her book - the Glenbow collection's watercolour is the earliest dated 1877 and titled *Indians in a Canoe, Lake of the Woods*. 'Verner's piece-de-resistance on his arrival in England was the painting *The Upper Ottawa*, which he showed at the Royal Academy' [N.G.C. oil on canvas 32 x 60 inches]

Prov: Laing Galleries, Toronto, label verso; private collection, Rexdale, Ontario

ESTIMATE: 12,000/16,000

WILLIAM PERCIVAL WESTON

A.R.C.A.

[1879-1967] CANADIAN

see *W.P. Weston*, by I. Thom, Art Gallery of Greater Victoria; *Silence and Solitude - the Art of W.P. Weston*, by L. Richardson, Richmond Art Gallery [Apr. 5 - May 17, 1993]; as well as *N.G.C. Catalogue of Paintings and Sculpture - Vol. III*, by R. Hubbard, pg. 330 for other examples

214

HOPE B.C.

oil on panel

12 x 15 in. / 30 x 38 cm. Dated: 1941

signed and dated lower left; signed and titled verso

Ref: in Ian Thom's *W.P. Weston*, there is an exhibition list for the artist with the B.C. Society of Fine Arts, 31st exhibition, 1941 - title Hope, B.C. - no media or size given

Prov: included with lot is a copy of *Silence and Solitude*, by L. Richardson, Richmond Art Gallery exhibit

ESTIMATE: 1,800/2,400

ANDIE WICHERTS

A.S.A.

[fl.1977] CANADIAN

see *Printmaking in Alberta 1919-1945*, by B.Cochrane, pg. 150 for biography and another example of the artist's work

- 215** NEEL'S WINDOW #3/30
coloured etching on paper
17.75 x 23.75 in. / 45 x 60 cm. Dated: 1975
signed, titled, numbered and dated along
bottom; paper size: 22.25 x 27.25 in.
Prov: private collection, Calgary
ESTIMATE: 150/250

DOROTHY HENZELL WILLIS

[b.1899] CANADIAN

see *Printmaking in British Columbia 1889-1983*, by N.Tuele, Art Gallery of Greater Victoria for biography and another example of the artist's work

- 216** ... THE STUDIO STOVE
linoblock on paper
9.5 x 6.5 in. / 24 x 17 cm.
signed lower right in image; signed and titled
on card; inscribed to Cliff Robinson
verso; some paper loss and tears in margins;
very fine tissue and irregular borders;
archival material throughout; unframed
Prov: ex-collection Cliff Robinson; private
collection, Southern Alberta
ESTIMATE: 200/300

JACK MARLOWE WISE

R.C.A.

[b.1928] CANADIAN

see *Jack Wise: A Decade of Work*, by G.Snider, Art Gallery of Greater Victoria, 1977 and *Carmanah* by Western Canadian Wilderness Committee, pg.162 for biography and other examples of the artist's work

- 217** #VIII
watercolour on paper
7 x 10.25 in. / 18 x 26 cm.
signed lower left; titled on label verso
Prov: E.A.G., Art Rental and West End Gallery,
Edmonton labels verso; private collection
ESTIMATE: 200/300

TOSHI YOSHIDA

[b.1911] JAPANESE

Toshi Yoshida comes from a distinguished Japanese artistic family - his father was Hiroshi Yoshida, a prominent printmaker; see *Modern Japanese Prints, An Art Reborn*, by O.Statler, pg.168

- 218** PLUM TREE AND BLUE MAGPIE
coloured woodblock on paper
9.5 x 14.75 in. / 24 x 37 cm.
signed and titled along bottom; paper size:
10.5 x 16 in.; archival material throughout
ESTIMATE: 200/300

UNKNOWN - BACHS

[20th century] CUBAN

- 219** UNTITLED - DANCING FIGURE
silkscreen poster on paper
27 x 18 in. / 69 x 46 cm. Dated: 1971
small creases along margin; unframed
Prov: Biblioteca Nacional 'Jose Marti',
La Habana, Cuba stamp verso
ESTIMATE: 50/75

- 220** FIESTA ...
silkscreen poster on paper
28 x 18 in. / 71 x 46 cm. Dated: 1971
small creases along margin; unframed
Prov: Biblioteca Nacional 'Jose Marti',
La Habana, Cuba stamp verso
ESTIMATE: 50/75

- 221** LA GRAN INCOGNITA ...
silkscreen poster on paper
28 x 18 in. / 71 x 46 cm. Dated: 1972
small creases along margin; unframed
Prov: Biblioteca Nacional 'Jose Marti',
La Habana, Cuba stamp verso
ESTIMATE: 50/75

UNKNOWN - DIMAS

[20th century] CUBAN

- 222** ENARORADOS - FILM SOVIETICO ...
silkscreen poster on paper
28 x 18.25 in. / 71 x 46 cm. Dated: 1971
small tear lower centre; unframed
Prov: Biblioteca Nacional 'Jose Marti',
La Habana, Cuba stamp verso
ESTIMATE: 50/75

JOHN LIM

[ca.1938] CANADIAN

222
223
224

20TH TORONTO OUTDOOR ART EXHIBIT
poster on paper
34.75 x 25.25 in. / 88 x 64 cm. Dated: 1981
creased along margin; unframed

TOGETHER WITH**RICHARD PAUL LOHSEW**

[20th century] AMERICAN

RICHARD PAUL LOHSE –
GALERIE DENISE RENE
silkscreen poster on paper
25.25 x 16 in. / 64 x 41 cm. Dated: 1967
some handling marks; unframed
LOT OF TWO – ESTIMATE: 40/60

UNKNOWN – SAMPSON

[20th century] CANADIAN

222
223
224

TO YOU THE TORCH IS THROWN – HELP
FINISH THE JOB – BUY VICTORY BONDS
poster on paper
35 x 23 in. / 89 x 58 cm. Dated: ca. 1914
some paper loss, small tears and creases in
margins; unframed
ESTIMATE: 150/250

RICHARD G. SEWELL

[b.1942] CANADIAN

222
223
224

R.G. SEWELL PRINTS –
ALBERT WHITE GALLERY
silkscreen poster on paper
42.25 x 32.75 in. / 107 x 83 cm.
creased along margin; unframed
ESTIMATE: 50/75

CARMELO SOBRINO

[20th century] AMERICAN

222
223
224

SOBRINO –
GALERIE DENISE RENE 6 WEST
57 STREET NEW YORK NOVEMBER 1971
silkscreen poster on paper
33.25 x 24.75 in. / 84 x 63 cm. Dated:
1971
some handling dimples and abrasions in
margin; unframed
Prov: Atelier Arcay mark lower left and Print-
ed in France verso
ESTIMATE: 40/60

UNKNOWN

[20th century] CANADIAN

222
223
224

QUEEN WEST STREET FAIR
poster on paper
18 x 14 in. / 46 x 36 cm. Dated: 1980
unframed

TOGETHER WITH**BANQUE DE MULHOUSE – FRENCH****FINDS – GALLERY SOHO**

poster on paper
22.75 x 11.5 in. / 58 x 29 cm.
creased along lower section; unframed
LOT OF TWO – ESTIMATE: 10/20

VICTOR VASARELY

[b.1908] HUNGARIAN

see *1991/92 Printworld Directory of Con-
temporary Prints*, by S.Smith, pg.920 for bi-
ography and listing of prints

222
223
224

VASARELY – DENISE RENE
silkscreen poster on paper
37 x 24.75 in. / 94 x 63 cm. Dated: 1971
several creases and handling marks; un-
framed
ESTIMATE: 50/75

THANK YOU FOR ATTENDING.

The next regularly schedule auction is
October, 1993. We are now accepting
consignments for the auction so please
contact the office early regarding con-
signments or artists you are looking for.

BIBLIOGRAPHY

- Agnes Etherington Art Centre - Permanent Collection*, by Frances Smith, published by the Agnes Etherington Art Centre, Queen's University, Kingston, 1968
- Art and Architecture in Canada: A Bibliography*, by Loren Lerner and Mary Williamson, published by the University of Toronto Press, Toronto, 1981
- The A.S.A. Index 1948-1980*, by Jan Roseneder, published by the University of Calgary Libraries, Calgary, 1982
- A Measure of Success - Graduates of the Alberta College of Art 1963-1984*, by Valerie Greenfield, published by the Alberta College of Art, Calgary, 1985
- Aquarelle - A History of the Canadian Society of Painters in Water Colour 1925-1985*, by Rebecca Sisler, published by the Canadian Society of Painters in Water Colour, Toronto, 1986
- Art Gallery of Hamilton Handbook*, by T.R. MacDonald, published by the Art Gallery of Hamilton, Hamilton, 1984
- Art Gallery of Ontario - the Canadian Collection*, published by the Art Gallery of Ontario, Toronto, 1987
- ARTBANK: A Database of the Visual Arts in Canada*, compiled by Doug Lewis, published by Artbank Incorporated, Calgary, 1993
- Artists, Builders and Dreamers - 50 Years at the Banff School*, by David and Peggy Leighton, published by McClelland and Stewart, Toronto, 1982
- Art Price Annual - ADEC 90, & ADEC 91, ADEC 92*, by Eric Michel, published by ADEC Production, Paris, 1990, 1991
- Artists in Canada - a Union List of Artists' Files*, by Susan Hasbary, published by the National Gallery of Canada Library, Ottawa, 1988
- Biographical Dictionary of Saskatchewan Artists - Women Artists*, by Marketa Newman, published by Fifth House Publishers, Saskatoon, 1990
- British Columbia Women Artists, 1885-1985*, by Nicholas Tuele, published by the Art Gallery of Greater Victoria, Victoria, 1985
- British Etchers 1850-1940*, by Kenneth M. Guichard, published by Robin Garton, London, 1981
- British Prints, Dictionary and Price Guide* by Ian Mackenzie, published by the Antique Collectors' Club, London, 1987
- Canadian Art Sales Index - Vol. 1 thru 13*, by Anthony Westbridge, published by Westbridge Publications Ltd., Vancouver, 1977 thru 1992
- Catalogue of the National Gallery of Canada, Ottawa - Canadian Art - Volume One / A-F*, by Charles Hill and Pierre Landry, published by the National Gallery of Canada, Ottawa, 1988
- A Concise History of Canadian Painting*, by Dennis Reid, published by Oxford University Press, Toronto, 1973
- Contemporary Canadian Art*, by David Burnett and Marilyn Shiff, published by Hurtig Publishers, Edmonton, 1983
- W.H. Coverdale Collection of Canadiana: Paintings, Watercolours and Drawings*, by Martha Cooke, published by Public Archives Canada, Ottawa, 1983
- Dictionary of British Art, Volume V, British Artists, 1880-1990*, by Jane Johnson and A.Greutner, published by the Antique Collectors' Club, Ltd., London, 1980
- A Dictionary of Canadian Artists - Vol. 1 thru 7*, by Colin MacDonald, published by Canadian Paperbacks Publishing Ltd., Ottawa, 1967 thru 1990
- Early Painters and Engravers in Canada*, by J. Russell Harper, published by the University of Toronto Press, Toronto, 1970
- The Flat Side of Landscape - the Emma Lake Artists' Workshops*, by John O'Brian, Ann Morrison, David Howard, Matthew Teitelbaum and Terry Atkinson, published by the Mendel Art Gallery, Saskatoon, 1989
- Founders of the Alberta College of Art*, by Valerie Greenfield, published by the Alberta College of Art, Calgary, 1986
- Gordon's Print Price Annual, 1990*, by Albert Wehner, published by Martin Gordon Inc., Naples, Florida, 1990
- History of the Royal Academy 1768 - 1886*, by Sidney Hutchison, published by Robert Royce Limited, London, 1986
- History of Wood Engraving*, by Albert Garrett, published by Bloomsbury Books, London, 1978
- Inuit - see
- Biographies of Inuit Artists*, published by Canadian Arctic Producers - a Division of Arctic Co-operatives Limited, Ottawa, 1984
- Inuit Artist Index Arranged by Last Name*, published by Indian and Northern Affairs Canada, Ottawa, January 1990
- Images of the Land: Canadian Block Prints 1919-1945*, by Patricia Ainslie, published by the Glenbow Museum, Calgary, 1984
- Landmarks of Canadian Art*, by Peter Mellen, published by McClelland and Stewart, Toronto, 1978
- The Mendel Art Gallery - Twenty-Five Years of Collecting*, by Matthew Teitelbaum, published by the Mendel Art Gallery, Saskatoon, 1989
- Montreal Museum of Fine Arts - Spring Exhibitions 1880 - 1970*, by E.McMann, published by the University of Toronto Press, Toronto, 1988
- The Mountains and the Sky*, by Lorne Render, published by the Glenbow-Alberta Institute, Calgary, 1974
- The National Gallery of Canada Catalogue of Paintings and Sculpture - Volume II: Modern European Schools*, by R.H. Hubbard, published by the University of Toronto Press, Toronto, 1959
- The National Gallery of Canada Catalogue of Paintings and Sculpture - Volume III: Canadian School*, by R.H. Hubbard, published by the University of Toronto Press, Toronto, 1960
- Painting in Alberta - An Historical Survey*, by Karen Wilkin, published by the Edmonton Art Gallery, Edmonton, 1980
- Painting in Canada: a History*, by J. Russell Harper, published by the University of Toronto Press, Toronto, 1966
- Printmaking in Alberta 1945-1985*, by Bente Roed Cochran, published by the University of Alberta Press, Edmonton, 1989
- The Printworld Directory - Contemporary Prints and Prices*, fourth edition, by Selma Smith, published by Printworld Inc., Bala Cynwyd, Pennsylvania, 1988
- Royal Canada Academy of Arts - R.C.A. - see
- Passionate Spirits - A History of the Royal Canadian Academy of Arts, 1880-1980*, by Rebecca Sisler, published by Clarke, Irwin and Company, Toronto, 1980
- Royal Canadian Academy of Arts, Exhibitions and Members 1880-1979*, by Evelyn de R.McMann, published by the University of Toronto Press, Toronto, 1981
- Selected View - The Longstaffe Collection 1959-1984*, by Lorna Farrell-Ward, published by the Vancouver Art Gallery, 1984
- Society of Canadian Painter-Etchers and Engravers in Retrospect*, by Andrew Oko, published by the Art Gallery of Hamilton, Hamilton, 1981
- Spaces and Places - Eight Decades of Landscape Painting in Alberta*, by Jetske Ironside, published by the Alberta Art Foundation, Edmonton, 1986
- University of Saskatchewan, Permanent Art Collection, 1980*, by Lynne Bell, published by the University of Saskatchewan, Saskatoon, 1980
- Vancouver - Art and Artists 1931-1983*, published by the Vancouver Art Gallery, Vancouver, 1983
- Visions - Contemporary Art in Canada*, by Robert Bringham, Geoffrey James, Russell Kezire and Doris Shadbolt, published by Douglas and McIntyre, Vancouver, 1983
- Western Untitled*, by Terrence Heath, published by the Glenbow-Alberta Institute, Calgary, 1976
- Winnipeg Art Gallery 1912-1962*, published by the Winnipeg Art Gallery, Winnipeg, 1962
- Winnipeg West - Painting in Western Canada 1945-1970*, by Christopher Varley, published by the Edmonton Art Gallery, Edmonton, 1983

ABSENTEE BID FORM

I wish to place the following confidential bid(s) with LEVIS Fine Art Auctions & Appraisals for their sale. I agree that LEVIS Fine Art Auctions & Appraisals will, to the best of their ability, attempt to purchase for me the following lots up to the maximum amount specified below, or where indicated plus one incremental bid.

NOTE TO ABSENTEE BIDDERS: All bids are accepted subject to the 'Standard Conditions of Sale' printed in the catalogue. The Amount listed is for hammer price – the Buyer's Premium of 10% and G.S.T. of 7% are in addition to the amounts listed below.

LEVIS Fine Art Auctions & Appraisals
A Division of Artbank Incorporated

#128, 1711 - 10 Avenue S.W.
Calgary, Alberta
T3C 0K1

Tel: (403) 541-9099

Fax: (403) 541-9097

Fax available until 12 noon DAY OF SALE

SALE DATE: MONDAY, APRIL 26TH, 1993

LOT NUMBER	ARTIST/ITEM	TOP HAMMER PRICE	PLUS ONE BID
------------	-------------	------------------	--------------

Payment may be made by cash, certified cheque, MasterCard, Visa or bank draft. Payment must be made in full the day of the auction.

Bank Reference:

MasterCard

ACCOUNT NO. _____

EXPIRY DATE _____

Visa

ACCOUNT NO. _____

EXPIRY DATE _____

I have read your Conditions of Sale printed in the catalogue and I am bidding in accordance with them.

SIGNATURE _____

DATE _____

NAME _____

ADDRESS _____

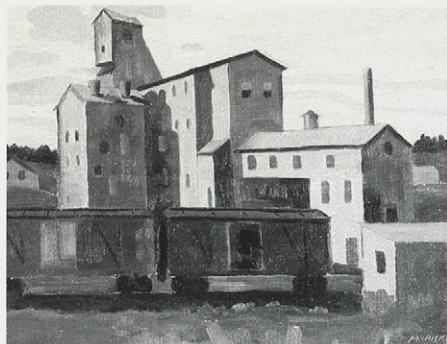
CITY _____

POSTAL CODE _____

RES _____

BUS _____

FAX _____



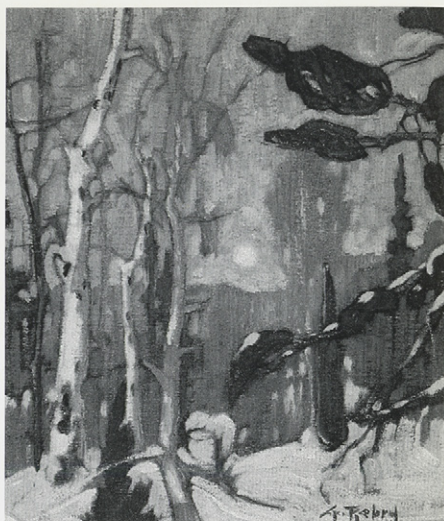
152

Pisko; Michael
Lethbridge, 1946
oil on canvas board



154

Plain Woman; Percy [Two Gun]
Untitled
coloured pencil on paper



158

Rebry; Gaston
Soleil Couchand
oil on canvas



167

Robinson; Clifford Feard
Untitled
conte on paper



161

Rigaux; Jack
Alberta Fall
oil on canvas



172

Sandham; J. Henry
Winter Landscape with Sunset
oil on canvas



173

Sawai; Noboru
Portrait of Artist
coloured etching on paper



177

School; 18th century Belgian
Untitled
oil on canvas



199

Stevenson; William L.
Spring Bouquet
oil on board



181

School; 19th Century Canadian
Across the St. Lawrence
watercolour on paper



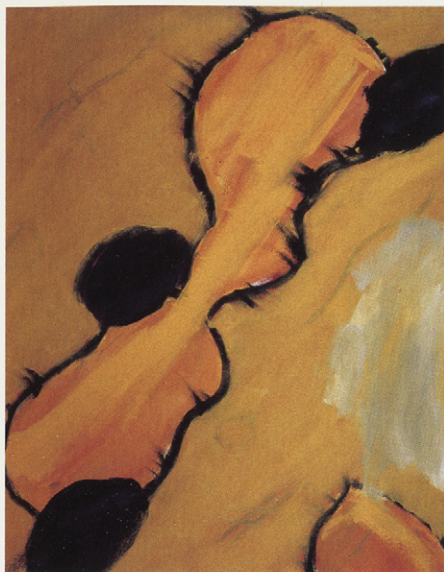
184

Sellin; Herbert Otto
Bragg Creek, 1978
oil on masonite



201

Symons; Robert David
Pool in a Wheatfield
watercolour on paper



116 Meredith; John
September 1975
oil on canvas



129 O'Neil; Bruce William
Wedge With Black Centre
oil on canvas



121 Mitchell; Janet
Near Salmon Arm B.C., 1945
oil on paper board



135 Palmer; Herbert Sidney
Sunshine and Shadow
oil on paper board



143 Phillips; Walter J.
Long Bay, Keewatin
coloured woodblock on paper



136 Panton; Lawrence A.C.
Farm Road
watercolour on paper



145

Phillips; Walter J.
Red River Road
coloured woodblock on paper



155

Pragnell; Bart
Calgary, About 1946
watercolour on paper



156

Pragnell; Bart
Shoppers After Four
watercolour with ink on paper



159

Reppen; Jack
Untitled
mixed media on paper and board



175

Schaefer; Carl Fellman
Light on Water
watercolour on paper



170

Ronald; William
Untitled - Abstract Composition
watercolour and ink on paper

LEVIS

FINE ART AUCTIONS & APPRAISALS

A DIVISION OF ARTBANK INC.

FINE ART AUCTION

PREVIEW

SATURDAY, APRIL 24TH, 10 A.M. TO 5 P.M.

SUNDAY, APRIL 25TH, 10 A.M. TO 5 P.M.

MONDAY, APRIL 26TH, 10 A.M. TO 2 P.M.

AUCTION

MONDAY, APRIL 26, 1993 AT 7:00 P.M.

PREVIEW AND AUCTION AT:

FORT CALGARY HISTORICAL PARK

750 - 9 AVENUE S.E.

CALGARY, ALBERTA

FOR MORE INFORMATION CONTACT:

DOUG LEVIS

LEVIS FINE ART AUCTIONS & APPRAISALS

#128, 1711 - 10 AVENUE S.W., CALGARY, ALBERTA T3C 0K1

TEL: (403) 541-9099 FAX: (403) 547-9097

G.S.T. R121 033 252

CATALOGUE \$15.00 (G.S.T. INCLUDED) • \$17.00 BY MAIL (G.S.T. INCLUDED)

A VIDEO OF THE COMPLETE SELECTION OF ARTWORK: \$30.00 (G.S.T. INCLUDED)

INDEX

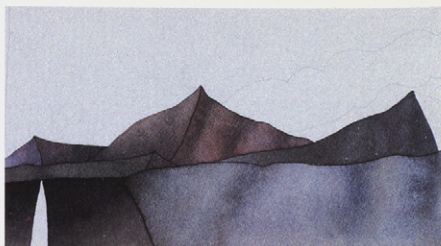
Aikman; W.	6	Chatfield; Thomas F.	30
Allen; W.H.	7	Christofferson; Gerda	31
Armstrong; William	8	Cloutier; S. Paul	32
Bachs; Unknown	219-221	Cosgrove; Stanley Morel	33
Balbar; George	9	Cowin; Jack L.	34-37
Banting; John	10	Cowles; Michael	38
Bates; Maxwell Bennett	11	Cresswell; William Nichol	39
Beebe; Frank Lyman	12	Crockford; Duncan M.	40
Bellefleur; Leon	13-14	Cummins; Earl	41
Bieler; Andre	15	Davis; Ardath	42
Black; Samuel	16	Davis; Richard	43
Blackwood; David Lloyd	17-20	Dimas; Unknown	222
Bloore; Ronald	21	Duma; William [Bill]	44-45
Boorne & May;	1-2	Dzubas; Friedel	46
Bradshaw; Alan Bruce	22	Elliott; Douglas	47
Bres; Hendrik	23	Enns; Maureen	48
Brimacombe; Errol	24-25	Esler; John Kenneth	49-52
Byrne; John	26	Evans; Meredith	53
Caddy; John Herbert	27-28	Fafard; Joseph	54
Challener; Frederick S.	29	Fenton; Terry	55

Fisher; Brian Richard	56-57	Palmer; Franklin	134
FitzGerald; Lionel LeMoine	58	Palmer; Herbert Sidney	135
Ford; Harriet Mary	59	Panton; Lawrence A.C.	136
Geesick; Robert Kakay	60-61	Parsons; William	137
Genn; Robert	62-63	Pellan; Alfred	138
Gersovitz; Sarah	64	Pemberton-Smith; Freda	139-140
Gibbs; Leonard	65	Phelps; Stan	142
Giesen; Martin	66	Phillips; Walter Joseph	143-150
Gissing; Roland	67	Pilot; Robert Wakeham	151
Graham; Colin D.	68	Pisko; Michael	152-153
Grandmaison; Orestes [Rick]	69-70	Plain Woman; Percy [Two Gun]	154
Gravel; Francine	71	Pragnell; Bart	155-156
Grooms; Red	72	Rebry; Gaston	157-158
Harvey; Reginald Llewellyn	73	Reppen; Jack	159
Hawkins; O. John	74	Richmond; Leonard	160
Hodgson; Thomas Sherlock	75	Rigaux; Jack	161-163
Husveti; Alexander S.	76	Rigaux; Ralph Jean	164-165
Innes; John	77	Roberts; Arthur	166
Jacobi; Otto Reinhold	78	Robinson; Clifford Feard	167-168
Janvier; Alex	79	Ronald; William	170
Janzen; Michael	80	Sailaw; W.	171
Kasyn; John	81-82	Sampson; Unknown	224
Kerr; Illingworth Holey	83-88	Sandham; J. Henry	172
Kiss; Steve	89	Sawai; Noboru	173-174
Knowles; Dorothy	90-91	Schaefer; Carl Fellman	175
Kost; Robert Theodore	92	Schnurrenberger; John Ralph	176
Kunichika; Toyohara	93	School; 18th century Belgian	177
Landseer; School of	94	- 19th/20th century Belgian	178-179
Langevin; Claude	95-96	- 19th century Scottish	180
Langley; William	97	- 19th century Canadian	181-183
Lansonius; Susanne	98	Sellin; Herbert Otto	184-186
Letendre; Rita	99	Sewell; Richard G.	225
Lim; John	223	Shelton; Margaret	187-188
Lindner; Ernest	100-102	Sinclair; Deborah Loughheed	189-191
Lindoe; Vivian	103	Sinclair; Robert	192-193
Litzgus; Hazel	104	Smith; Gordon Appelbe	194-196
Loates; Glen	105	Snow; John	197
Lohsewn; Richard Paul	223	Sobrinio; Carmelo	226
Maltman; William	106	Stela; Unknown	200
Marich; Geza	107	Stevenson; William L.	198-199
Martin; Thomas Mower	108-110	Surridge; Katherine	200
Matt; Leonard J.	111	Symons; Robert David	201
May; Henrietta Mabel	112	Thornton; Mildred Valley	202
McInnis; Robert F.M.	113	Tonin; L.	203-204
McIntosh; Don	114	Town; Harold Barling	205
Menin; Pericle	115	Trevor; C.	206
Meredith; John	116-117	Turner; John Davenall	207
Middleton; Janet Holly	118	Tymoshenko; Frederick J.	208
Millard; Colleen Anderson	119	Underwood; Leon	209
Milne; David Brown	120	Unknown;	227
Mitchell; Janet	121	Urquhart; Tony	210-211
Monro; Alasdair	122-123	Van Belkum; Joan	212
Motter; Francis Douglas	124	Vasarely; Victor	228
Newton; Alison Houston	125	Verner; Frederick Arthur	213
Nicoll; James [Jim] M.	126-127	Weston; William Percival	214
Nicoll; Marion Florence	128	Wicherts; Andie	215
Noble; George	3-5	Willis; Dorothy Henzell	216
O'Neil; Bruce William	129	Wise; Jack Marlowe	217
Okey; Ronald N.	130	Yoshida; Toshi	218
Onley; Toni	131-133		



176

Schnurrenberger; John Ralph
High Country Corral
oil on canvas board



192

Sinclair; Robert
Mts
watercolour on paper



180

School; Scottish
Scottish Loch at Sunset
gouache on illustration board



194

Smith; Gordon Appelbe
Creek
oil on masonite



189

Sinclair; Deborah Lougheed
Summit to Summit - Mt. Temple
acrylic on canvas



198

Stevenson; William L.
Still Life with Toby Jug
oil on board



213

Verner; Frederick
Indians in a Canoe, 1880
watercolour on paper



120

Milne; David Brown
Rock in the Bay
watercolour on paper